

LOC/DME I-XUU	APP CRS	Rwy Idg	9000
110.15	003°	TDZE	744
Chan 38 (Y)		Apt Elev	748

ILS or LOC RWY 36L

CHARLOTTE/DOUGLAS INTL (CLT)

⚠

Circling NA at night. Simultaneous approach authorized.

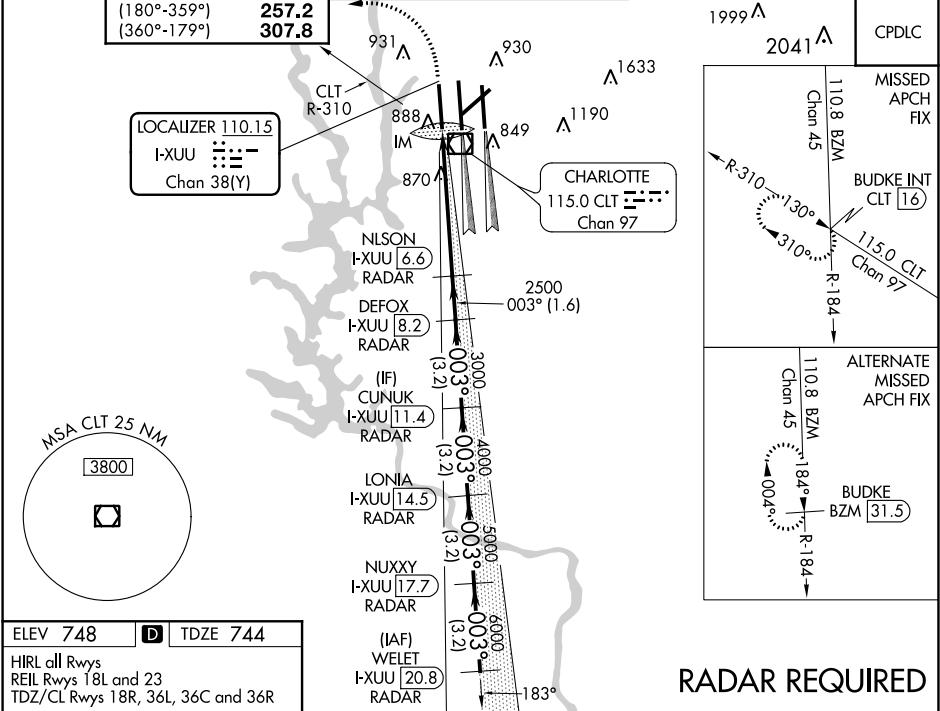
⚠

DME or RADAR required.

ALSIF-2

MISSED APPROACH: Climb to 1200 then climbing left turn to 4000 on CLT VOR/DME R-310 to BUDKE/CLT 16 DME and hold.

D-ATIS	CHARLOTTE APP CON	CHARLOTTE TOWER	GND CON	CLNC DEL
ARR 121.15	(001°-119°) 128.32	(Rwys 18L-36R, 5-23) 118.1 257.8	121.8 348.6 (WEST)	127.15
DEP 132.1	(120°-295°) 120.05	(Rwy 18C-36C) 126.4 257.8	121.9 348.6 (EAST)	348.6
	(296°-360°) 134.75	(Rwy 18R-36L) 133.35 257.8		
	(180°-359°) 257.2			
	(360°-179°) 307.8			



ELEV **748**

D

TDZE **744**

HIRL all Rwys

REIL Rwys 18L and 23

TDZ/CL Rwys 18R, 36L, 36C and 36R

Knots	60	90	120	150	180
Min:Sec	5:18	3:32	2:39	2:07	1:46

1200	4000	CLT R-310	BUDKE INT	VGSI and ILS glidepath not coincident (VGSI Angle 3.00/TCH 70).	WELET I-XUU [20.8] RADAR
*LOC only.					
I-XUU [1.3]	I-XUU [2.5]	NLSN I-XUU [6.6] RADAR	DEFOX I-XUU [8.2] RADAR	CUNUK I-XUU [11.4] RADAR	LONIA I-XUU [14.5] RADAR
IM	2500	3000	4000	5000	6000
0.1 NM	1.1 NM	4.1 NM	1.6 NM	3.2 NM	3.2 NM
CATEGORY A					
S-ILS 36L 944/18 200 (200-½)					
S-LOC 36L 1180/24 436 (500-½) 1180/40 436 (500-¾)					
CIRCLING 1380-1 632 (700-1) 1500-2¼ 752 (800-2¼) 1500-2½ 752 (800-2½)					