

KNIGHTS TWO DEPARTURE

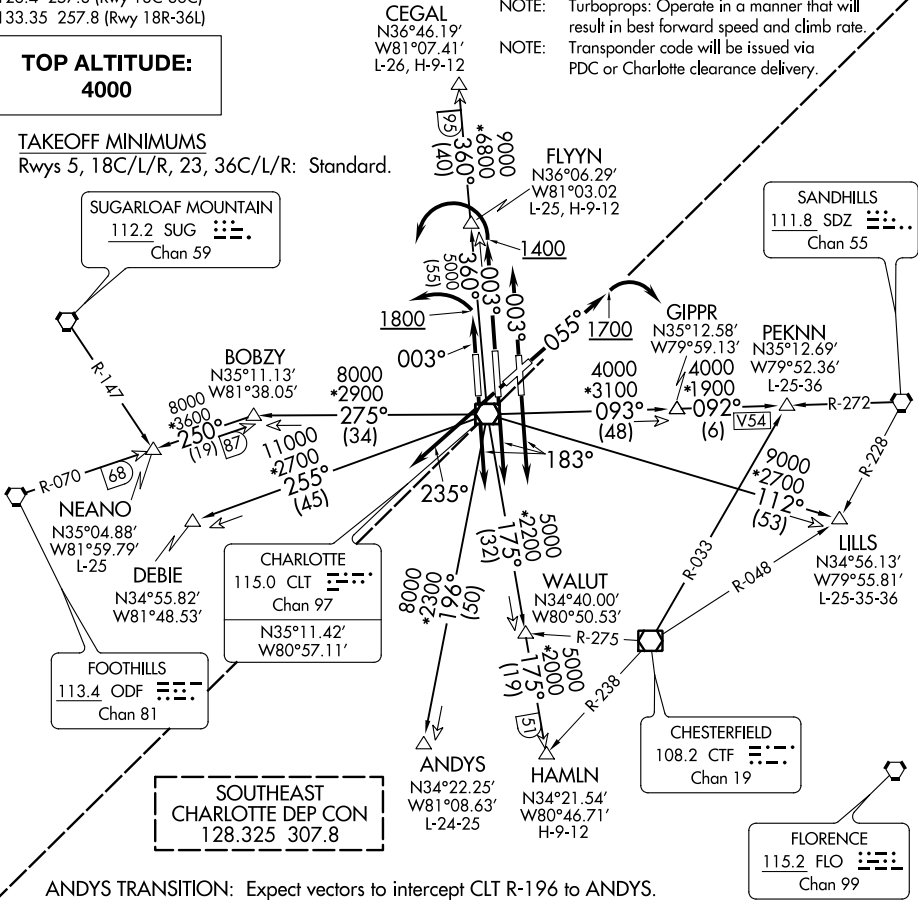
D-ATIS DEP 132.1
CLNIC DEL
127.15 348.6
CPDLC
GND CON
121.8 348.6 (WEST)
121.9 348.6 (EAST)
CHARLOTTE TOWER
118.1 257.8 (Rwys 18L-36R, 5-23)
126.4 257.8 (Rwy 18C-36C)
133.35 257.8 (Rwy 18R-36L)

TOP ALTITUDE:
4000

TAKEOFF MINIMUMS
Rwys 5, 18C/L/R, 23, 36C/L/R: Standard.

SUGARLOAF MOUNTAIN
112.2 SUG
Chan 59

SANDHILLS
111.8 SDZ
Chan 55



ANDYS TRANSITION: Expect vectors to intercept CLT R-196 to ANDYS.
CEGAL TRANSITION: Expect vectors to intercept CLT R-360 to CEGAL.
DEBIE TRANSITION: Expect vectors to intercept CLT R-255 to DEBIE.
FLYNN TRANSITION: Expect vectors to intercept CLT R-360 to FLYNN.
HAMLN TRANSITION: Expect vectors to intercept CLT R-175 to HAMLN.
LILLS TRANSITION: Expect vectors to intercept CLT R-112 to LILLS.
NEANO TRANSITION: Expect vectors to intercept CLT R-275 to BOBZY then ODF R-070 to NEANO.
PEKNN TRANSITION: Expect vectors to intercept CLT R-093 to GIPPR then SDZ R-272 to PEKNN.

NOTE: Chart not to scale.

(NARRATIVE ON FOLLOWING PAGE)

KNIGHTS TWO DEPARTURE