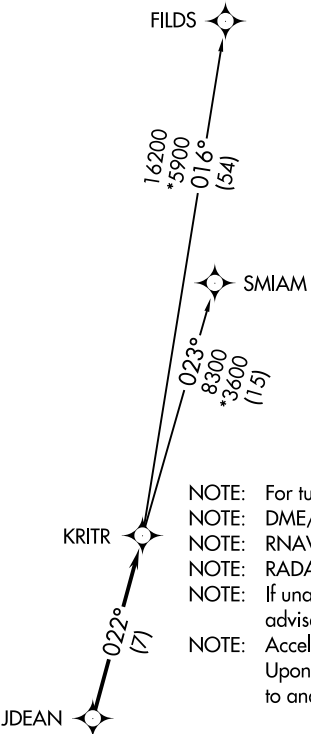


D-ATIS DEP 132.1
CLNC DEL
127.15 348.6
CPDLC
GND CON
121.8 348.6 (WEST)
121.9 348.6 (EAST)
CHARLOTTE TOWER
118.1 257.8 (Rwys 18L-36R, 5-23)
126.4 257.8 (Rwy 18C-36C)
133.35 257.8 (Rwy 18R-36L)
CHARLOTTE DEP CON
120.5 257.2

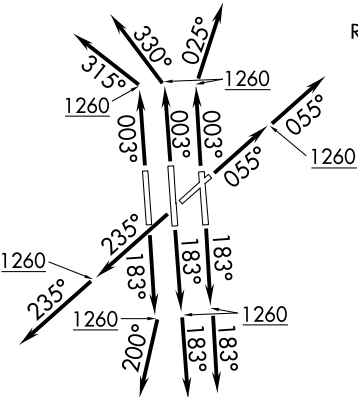
TOP ALTITUDE:
8000



- NOTE: For turbojets only.
- NOTE: DME/DME/IRU or GPS required.
- NOTE: RNAV 1.
- NOTE: RADAR required.
- NOTE: If unable to accept climb rates, advise ATC on initial contact.
- NOTE: Accelerate to 250K, if unable advise ATC. Upon reaching 10000 MSL, accelerate to and maintain 280K, if unable advise ATC.

TAKEOFF MINIMUMS

Rwys 18C/L/R, 23, 36C/R: Standard with minimum climb of 500' per NM to 1260.
Rwy 5: Standard with minimum climb of 500' per NM to 1300.
Rwy 36L: Standard with minimum climb of 500' per NM to 1400.



(NARRATIVE ON FOLLOWING PAGE) NOTE: Chart not to scale.

SE-2, 31 DEC 2020 to 28 JAN 2021

SE-2, 31 DEC 2020 to 28 JAN 2021