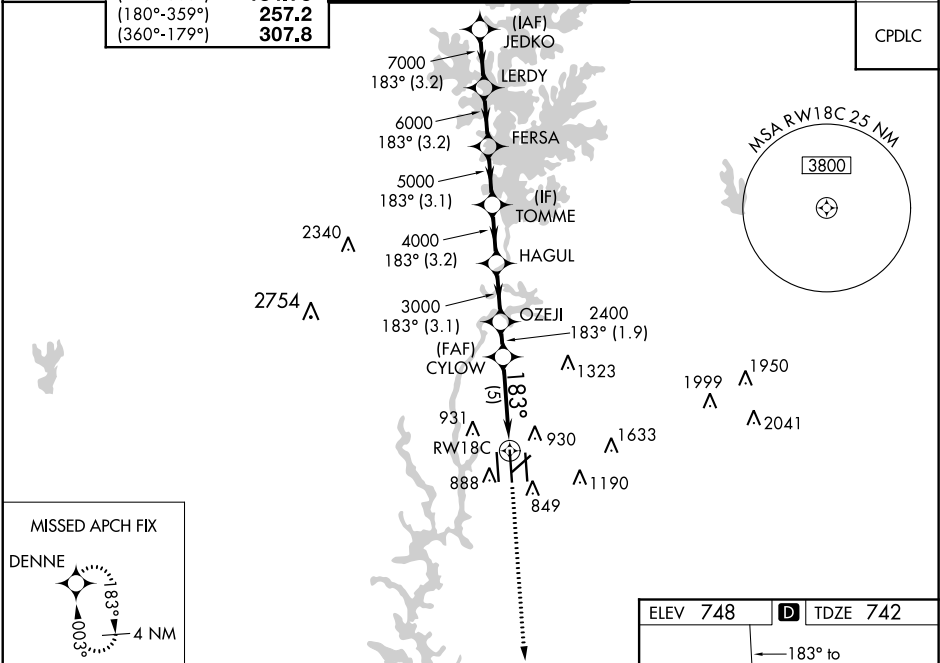


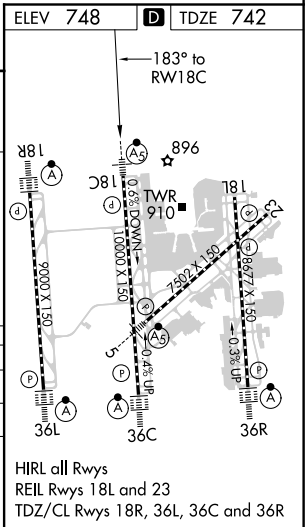
APP CRS	Rwy Idg 10000
183°	TDZE 742
	Apt Elev 748

RNAV (RNP) Z RWY 18C
CHARLOTTE/DOUGLAS INTL (CLT)

RNP AR APCH.		MALSR	MISSED APPROACH: Climb to 3000 direct DENNE and hold.	
Simultaneous approach authorized. For uncompensated Baro-VNAV systems, procedure NA below -11°C or above 54°C.				
D-ATIS	CHARLOTTE APP CON	CHARLOTTE TOWER	GND CON	CLNC DEL
ARR 121.15	(001°-119°) 128.325	(Rwys 18L-36R, 5-23) 118.1 257.8	121.8 348.6 (WEST)	127.15
DEP 132.1	(120°-295°) 120.05	(Rwy 18C-36C) 126.4 257.8	121.9 348.6 (EAST)	348.6
	(296°-360°) 134.75	(Rwy 18R-36L) 133.35 257.8		
	(180°-359°) 257.2			
	(360°-179°) 307.8			



JEDKO LERDY FERSA TOMME HAGUL OZEJI CYLOW RW18C				
8000 783° 7000 6000 5000 4000 3000 2400				
GP 3.00° TCH 55				
-3.2 NM 3.2 NM 3.1 NM 3.2 NM -3.1 NM -1.9 NM -5 NM				
CATEGORY	A		B	
RNP 0.11 DA	1067/26		325 (400-½)	
RNP 0.30 DA	1177/40		435 (500-¾)	



AUTHORIZATION REQUIRED

SE-2, 31 DEC 2020 to 28 JAN 2021

SE-2, 31 DEC 2020 to 28 JAN 2021