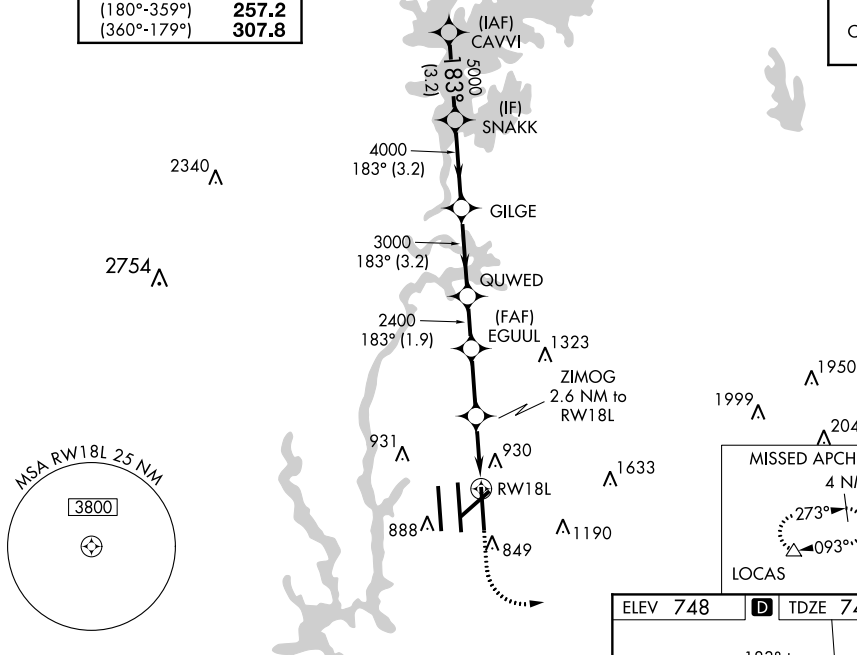


RNAV (GPS) Y RWY 18L
CHARLOTTE/DOUGLAS INTL (CLT)

⚠ Circling NA at night: Simultaneous approach authorized. LNAV procedure NA during simultaneous operations. Use of FD or AP required during simultaneous operations.
⚠ Rwy 18L helicopter visibility reduction below RVR 4000 NA. For uncompensated Baro-VNAV systems, LNAV/VNAV NA below -11°C or above 54°C.

MISSED APPROACH: Climb to 1300 then climbing left turn to 4000 direct LOCAS and hold.

(180°-359°)	257.2	 (IAF) CAVI	CPDLC
(360°-179°)	307.8		



SE-2, 31 DEC 2020 to 28 JAN 2021

SE-2, 31 DEC 2020 to 28 JAN 2021

