

WAAS CH 82415 W18D	APP CRS 183°	Rwy Idg TDZE 744 Apt Elev 748
--	------------------------	---

RNAV (GPS) Y RWY 18R
CHARLOTTE/DOUGLAS INTL (CLT)

RNP APCH

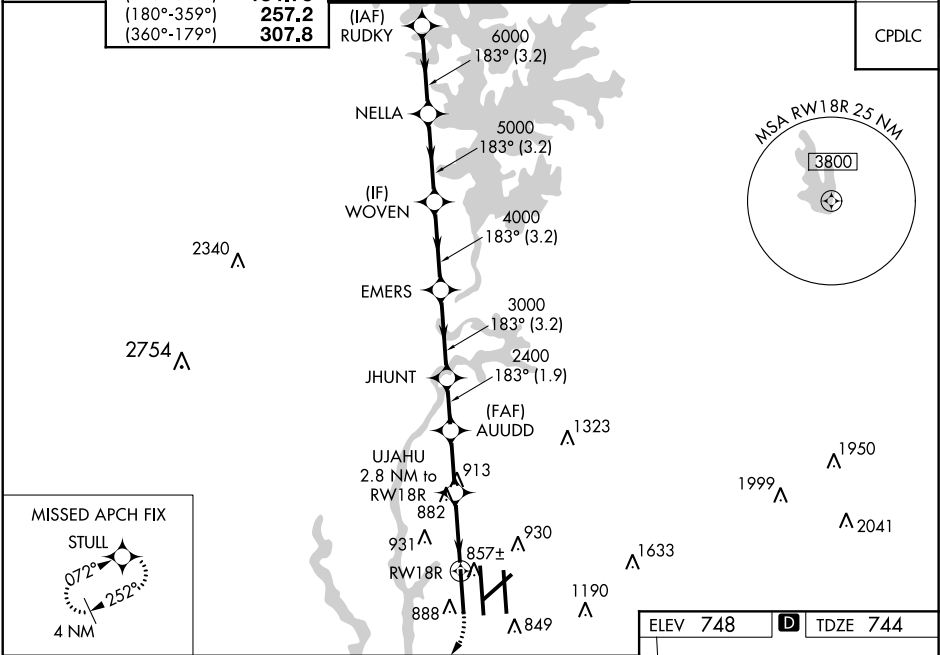
⚠

Circling NA at night. Simultaneous approach authorized. LNAV procedure NA during simultaneous operations. Use of FD or AP providing RNAV track guidance required during simultaneous operations. For uncompensated Baro-VNAV systems, LNAV/VNAV NA below -11°C or above 54°C. For inop ALS, increase LNAV/VNAV all Cats visibility to RVR 4500. For inop ALS, increase LNAV Cat C/D visibility to RVR 5500.

ALSF-2

MISSED APPROACH: Climb to 1200 then climbing right turn to 4000 direct STULL and hold, continue climb-in-hold to 4000.

D-ATIS ARR 121.15 DEP 132.1	CHARLOTTE APP CON (001°-119°) 128.32 (120°-295°) 120.05 (296°-360°) 134.75 (180°-359°) 257.2 (360°-179°) 307.8	CHARLOTTE TOWER (Rwys 18L-36R, 5-23) 118.1 257.8 (Rwy 18C-36C) 126.4 257.8 (Rwy 18R-36L) 133.35 257.8	GND CON 121.8 348.6 (WEST) 121.9 348.6 (EAST)	CLNC DEL 127.15 348.6
---	--	---	---	---



RUDKY NELLA		VGSI and RNAV glidepath not coincident (VGSI Angle 2.80/TCH 65).		1200	4000	STULL
7000		183°	6000	5000	4000	3000
GP 3.00°						
TCH 55						
3.2 NM		3.2 NM	3.2 NM	3.2 NM	1.9 NM	2.2 NM
CATEGORY		A	B	C	D	
LPV DA		944/18		200 (200-½)		
LNAV/VNAV DA		1018/24		274 (300-½)		
LNAV MDA		1120/24	376 (400-½)	1120/40	376 (400-¾)	
CIRCLING		1380-1	632 (700-1)	1500-2¼ 752 (800-2¼)	1500-2½ 752 (800-2½)	

ELEV 748

D

TDZE 744

183° to RW18R

HIRL all Rwys

REIL Rwys 18L and 23

TDZ/CL Rwys 18R, 36L, 36C and 36R