

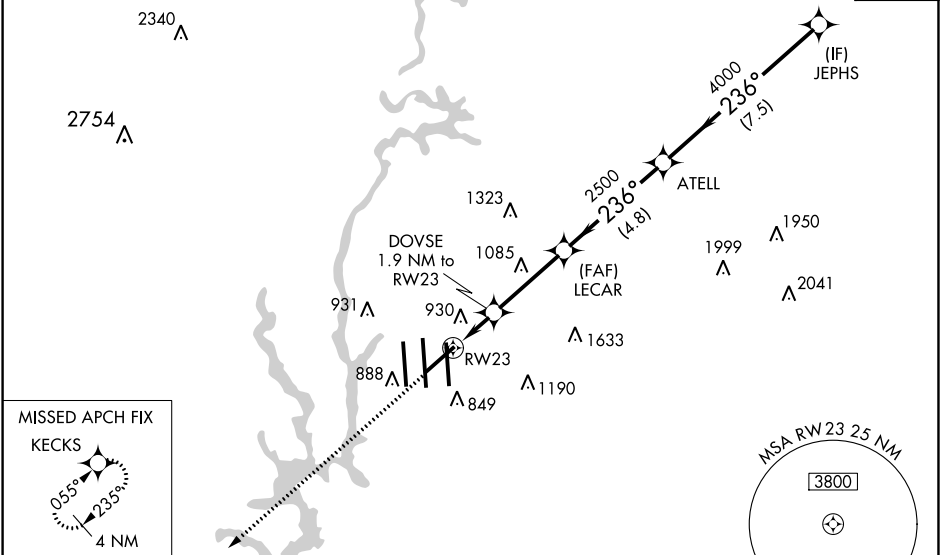
WAAS CH 45906 W23A	APP CRS 236°	Rwy Idg TDZE 747 Apt Elev 748
--	------------------------	---

RNAV (GPS) Y RWY 23
CHARLOTTE/DOUGLAS INTL (CLT)

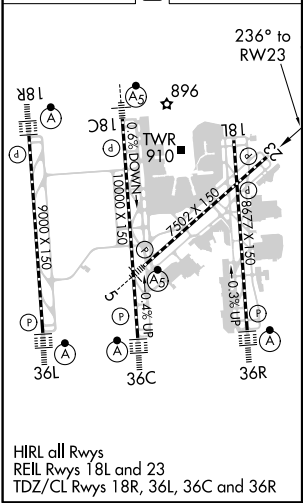
⚠ Circling NA at night. For uncompensated Baro-VNAV systems, LNAV/VNAV NA below -16°C (4°F) or above 47°C (116°F). DME/DME RNP-0.3 NA.

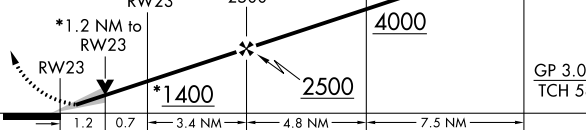

MISSED APPROACH: Climb to 4000 direct KECKS and hold, continue climb-in-hold to 4000.

D-ATIS	CHARLOTTE APP CON	CHARLOTTE TOWER	GND CON	CLNC DEL
ARR 121.15 DEP 132.1	(001°-119°) 128.32 (120°-295°) 120.05 (296°-360°) 134.75 (180°-359°) 257.2 (360°-179°) 307.8	(Rwys 18L-36R, 5-23) 118.1 257.8 (Rwy 18C-36C) 126.4 257.8 (Rwy 18R-36L) 133.35 257.8	121.8 348.6 (WEST) 121.9 348.6 (EAST)	127.15 348.6
				CPDLC



ELEV 748	D	TDZE 747
-----------------	----------	-----------------



4000 ↑ KECKS	VGSI and RNAV glidepath not coincident (VGSI Angle 3.00/TCH 54).				JEPHS
* LNAV only	DOVSE 1.9 NM to RW23	LECAR 2500	ATELL	6000	
	*1.2 NM to RW23	*1400	2500	4000	GP 3.00° TCH 58
CATEGORY	A		B	C	D
LPV DA	947/40		200 (200-¾)		
LNAV/ VNAV DA	1222-1¾		475 (500-1¾)		
LNAV MDA	1180/50	433 (500-1)	1180/60 433 (500-¼)	1180-1½ 433 (500-½)	
 CIRCLING	1380-1	632 (700-1)	1500-2¼ 752 (800-2¼)	1500-2½ 752 (800-2½)	