

LOC I-GJC 108.95	APP CRS 052°	Rwy Idg TDZE Apt Elev	7001 228 236
----------------------------	------------------------	-----------------------------	---

ILS or LOC RWY 5
COLUMBIA METROPOLITAN (CAE)

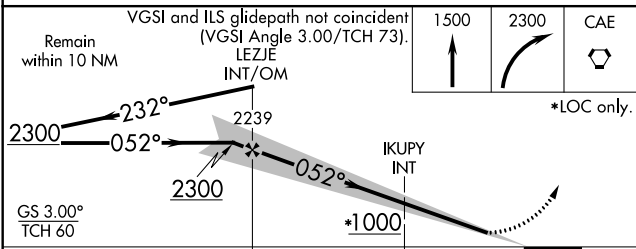
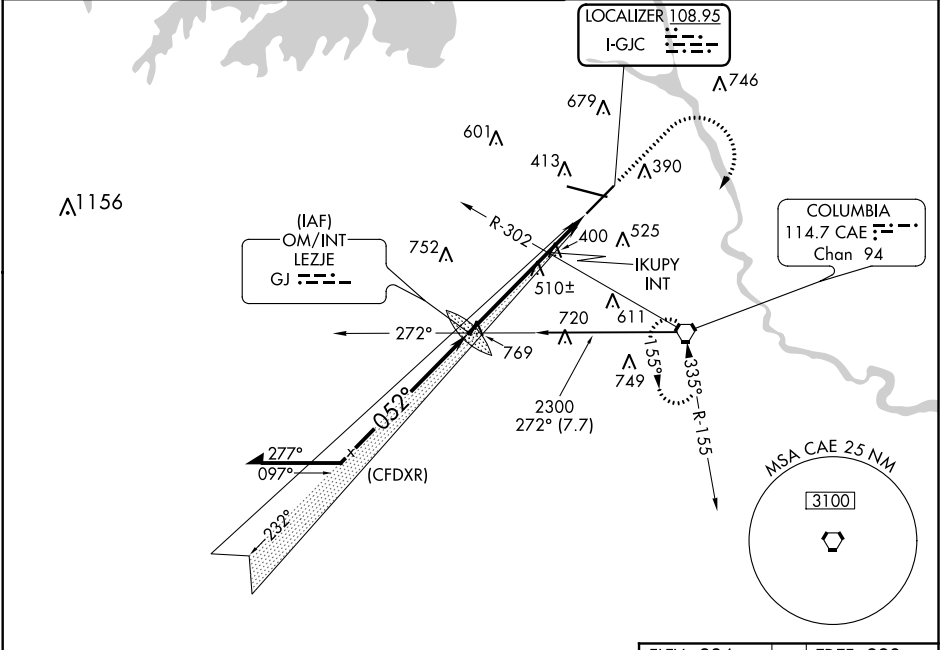
V
A

**RVR 1800 authorized with the use of FD or AP or HUD to DA.

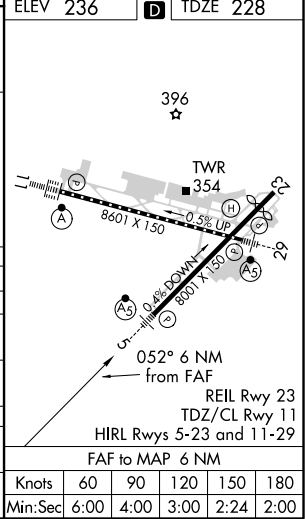
MALSR

MISSED APPROACH: Climb to 1500 then climbing right turn to 2300 direct CAE VORTAC and hold.

ATIS 120.15	COLUMBIA APP CON 133.4 285.6 (290°-109°) 124.15 338.2 (110°-289°)	COLUMBIA TOWER 119.5 257.8	GND CON 121.9 348.6	CLNC DEL 119.75
-----------------------	---	--------------------------------------	-------------------------------	---------------------------



CATEGORY	A	B	C	D
S-ILS 5 **		428/24	200 (200-1/2)	
S-LOC 5	1000/24 772 (800-1/2)	1000/40 772 (800-3/4)	1000-1 3/4 772 (800-1 3/4)	1000-2 772 (800-2)
CIRCLING	1000-1 764 (800-1)	1000-1 1/4 764 (800-1 1/4)	1000-2 1/4 764 (800-2 1/4)	1000-2 1/2 764 (800-2 1/2)
IKUPY FIX MINIMUMS (DUAL VOR RECEIVER REQUIRED)				
S-LOC 5	700/24 472 (500-1/2)	700/40 472 (500-3/4)	700/50 472 (500-1)	
CIRCLING	760-1 524 (600-1)	840-1 3/4 604 (700-1 3/4)	880-2 644 (700-2)	



SE-2, 31 DEC 2020 to 28 JAN 2021

SE-2, 31 DEC 2020 to 28 JAN 2021