

WAAS CH <b>45526</b> <b>W05A</b>	APP CRS <b>052°</b>	Rwy Idg TDZE Apt Elev	<b>7001</b> <b>228</b> <b>236</b>
--	------------------------	-----------------------------	---

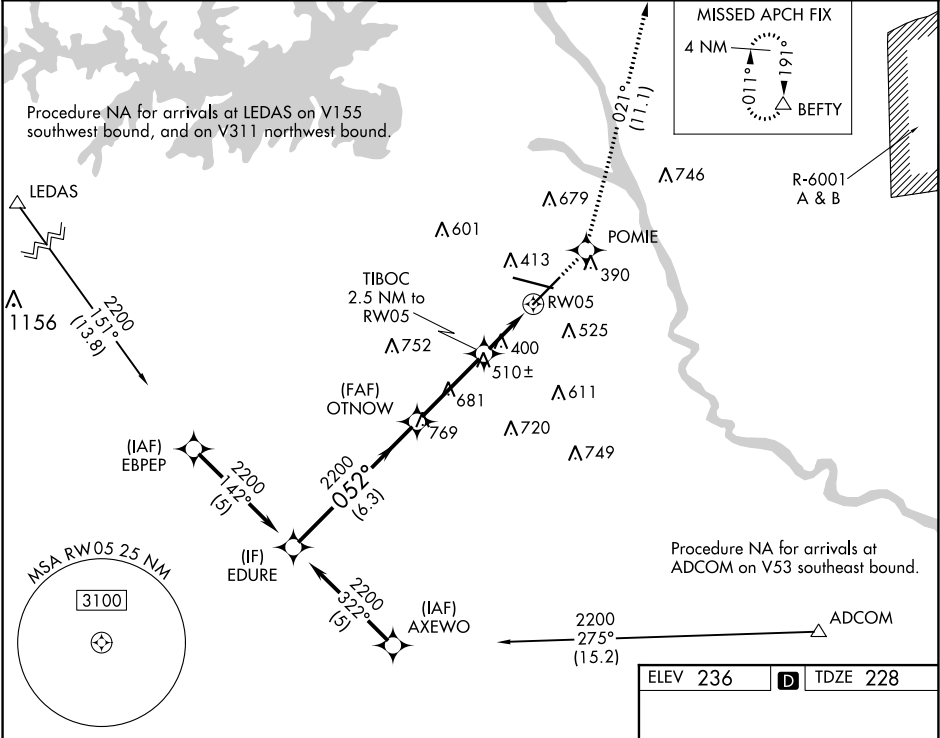
**RNAV (GPS) RWY 5**  
COLUMBIA METROPOLITAN (CAE)

**⚠** For uncompensated Baro-VNAV systems, LNAV/VNAV NA below -15°C (5°F) or above 48°C (118°F). DME/DME RNP-0.3 NA.  
\*\*RVR 1800 authorized with use of FD or AP or HUD to DA.

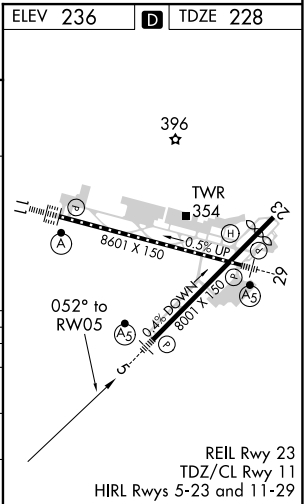
MALSR

MISSED APPROACH: Climb to 2400 direct POMIE and on track 021° to BEFTY and hold.

ATIS <b>120.15</b>	COLUMBIA APP CON <b>133.4 285.6</b> (290°-109°) <b>124.15 338.2</b> (110°-289°)	COLUMBIA TOWER <b>119.5 257.8</b>	GND CON <b>121.9 348.6</b>	CLNC DEL <b>119.75</b>
-----------------------	---	--------------------------------------	-------------------------------	---------------------------



VGSI and RNAV glidepath not coincident (VGSI Angle 3.00/TCH 73).				
EDURE      OTNOW      TIBOC      POMIE      BEFTY				
2200      2200      2400      2400      tr 021°				
GP 3.00° TCH 60      *1080      *LNAV only.				
6.3 NM      3.4 NM      1.2 NM      1.3 NM				
CATEGORY	A	B	C	D
LPV DA **	428/24 200 (200-½)			
LNAV/VNAV DA	638/50 410 (500-1)			
LNAV MDA	700/24	472 (500-½)	700/40	700/50
			472 (500-¾)	472 (500-1)
CIRCLING	740-1	504 (600-1)	840-1¾	880-2
			604 (700-¾)	644 (700-2)



SE-2, 31 DEC 2020 to 28 JAN 2021

SE-2, 31 DEC 2020 to 28 JAN 2021