
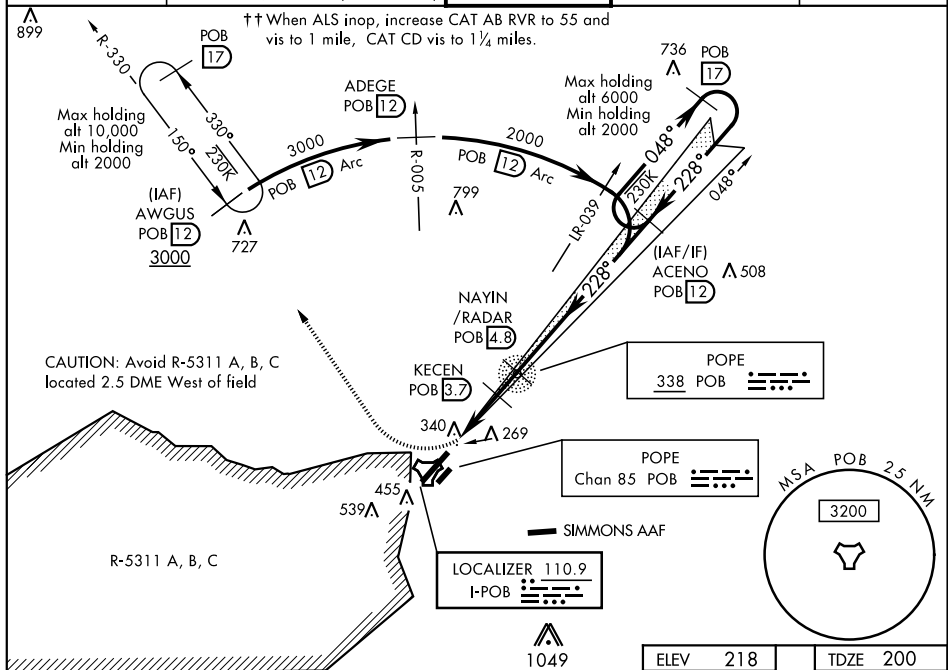


ILS or LOC Z RWY 23

LOC I-POB 110.9	APCH CRS 228°	Rwy Idg 7501 TDZE 200 Arpt Elev 218	AL-147 [USAF]	POPE AAF (KPOB)
<p>▼ * When ALS inop, increase RVR to 40 and vis to $\frac{3}{4}$ mile. ** When ALS inop, increase CAT AB RVR to 55 and vis to 1 mile, CAT CD RVR to 60, vis to $1\frac{1}{2}$ miles. *** Circling not authorized SE of Rwy 5-23.</p>			ALSF-1 	MISSED APPROACH: Climbing right turn to 2000 direct AWGUS and Hold.

ATIS		FAYETTEVILLE APP CON		POPE TOWER	GND CON	CLNC DEL
132.3	353.725	125.175	285.575 (271° - 090°)	135.025	291.1	124.55 275.8
		133.0	290.25 (091° - 270°)			275.8



RADAR REQUIRED

EMERG SAFE ALT 100 NM 5300 FROM "POB" TACAN

CATEGORY	A	B	C	D
S-ILS 23 *	400/24		200	(200-½)
S-LOC 23 **	620/24	420 (500-½)	620/40	420 (500-¾)
*** C CIRCLING	760-1	542 (600-1)	920-2 702 (800-2)	1060-2¾ 842 (900-2¾)
WITHOUT LAST STEPDOWN FIX				
S-LOC 23 ++	640/24	440 (500-½)	640/45	440 (500-¾)

