


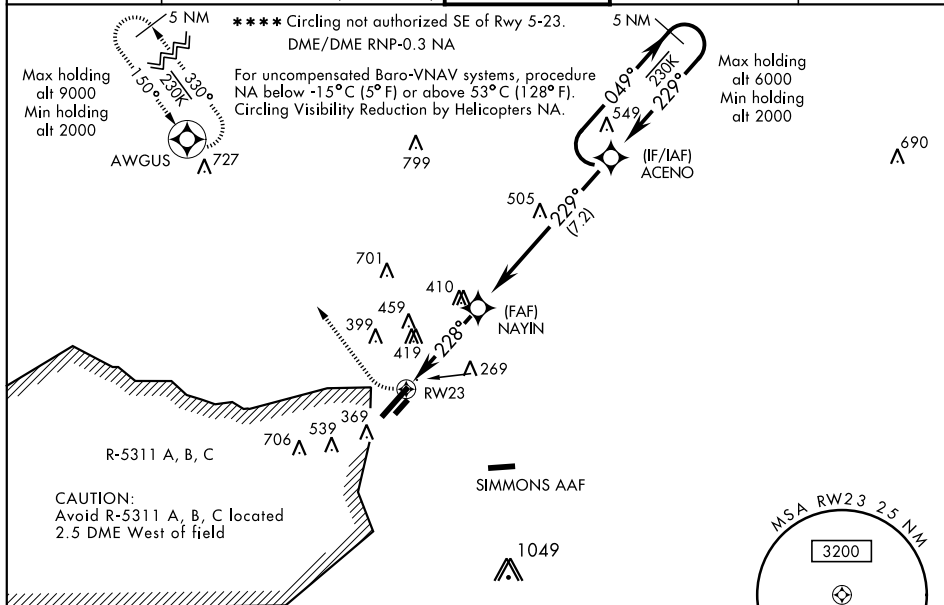
WAAS Chan 52202 W23A	APCH CRS 228°	Rwy Idg 7501 TDZE 200 Arpt Elev 218
--	-------------------------	--

AL-147 [USAF]

POPE AAF (KPOB)

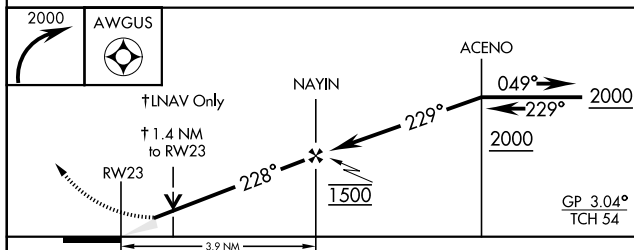
<p>V * When ALS inop, increase CAT ABCD RVR to 40 vis to $\frac{3}{4}$ mile.</p> <p>** When ALS inop, increase CAT ABCD vis to $1\frac{1}{4}$ mile.</p> <p>*** When ALS inop, increase CAT AB RVR to 55 and vis to 1 mile, CAT CD vis to $1\frac{3}{4}$ miles.</p>	<p>ALS-F1</p> 	<p>MISSED APPROACH: Climbing right turn to 2000 direct AWGUS and hold.</p>
--	---	--

ATIS		FAYETTEVILLE APP CON		POPE TOWER		GND CON		CLNC DEL	
132.3	353.725	125.175	285.575 (271° - 090°)	135.025	291.1	124.55	275.8		275.8
		133.0	290.25 (091° - 270°)						



RADAR REQUIRED

EMERG SAFE ALT 100 NM 5300



CATEGORY	A	B	C	D
LPV *	400/24	200	(200-½)	
INAV/ ** VNAV DA	572/40	372	(400-¾)	
INAV MD ***	680/24 480 (500-½)	680/50 480 (500-1)		
**** C CIRCLING	760-1 542 (600-1)	920-2 702 (800-2)	1060-2 842 (900-2¾)	

FIFV 218		TDZF 200
----------	--	----------

Rwy 05 Idg 7501'
Rwy 23 Idg 7501'

