

HI-ILS or LOC Z RWY 26

LOC I-DDX 109.9	APCH CRS 261°	Rwy ldg 11,760 TDZE 109 Arprt Elev 109
---------------------------	-------------------------	--

JAL-169 [USAF]

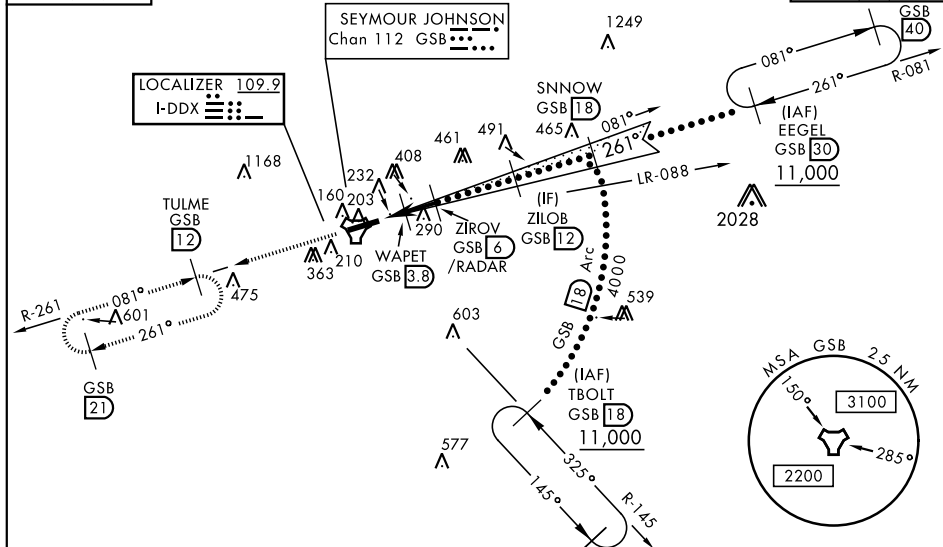
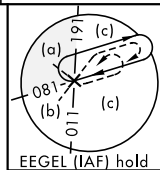
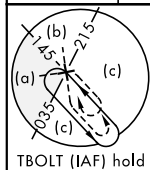
SEYMOUR JOHNSON AFB (KGSB)

- ▼ * When ALS inop, increase RVR to 40 and vis to $\frac{3}{4}$ mile.
 ** When ALS inop, increase RVR to 60 and vis to $1\frac{1}{2}$ miles.
 *** Circling N of Rwy 8-26 not authorized.



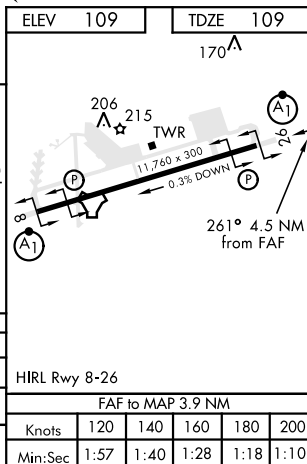
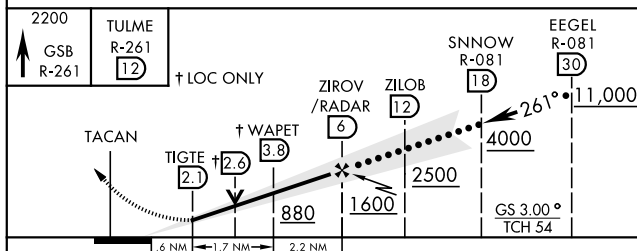
MISSED APPROACH: Climb to 2200 via GSB
 TACAN R-261 to TULME and hold.

ATIS ★ 317.625	SEYMOUR JOHNSON APP CON 258°-110° 123.7 290.9 111°-257° 119.7 273.6	SEYMOUR JOHNSON TOWER ★ 126.25 370.875	GND CON 138.1 275.8	CLNC DEL 128.025 270.8
--------------------------	---	--	-------------------------------	----------------------------------



RADAR or DME REQUIRED

EMERG SAFE ALT 100 NM 3700



CATEGORY	C	D	E
S-ILS 26 *	309/24	200 (200-½)	
S-LOC 26 **	500/35	391 (400-¾)	
*** CIRCLING	680-1½ 571 (600-1½)	700-2 591 (600-2)	760-2¼ 651 (700-2¼)

HI-ILS or LOC Z RWY 26