

HI-ILS or LOC Z RWY 8

LOC I-GSB <u>109.3</u>	APCH CRS 081°	Rwy Idg 11,760 TDZE 73 Arpt Elev 109	JAL-169 [USAF]	SEYMOUR JOHNSON AFB (KGSB)
----------------------------------	-------------------------	---	----------------	----------------------------

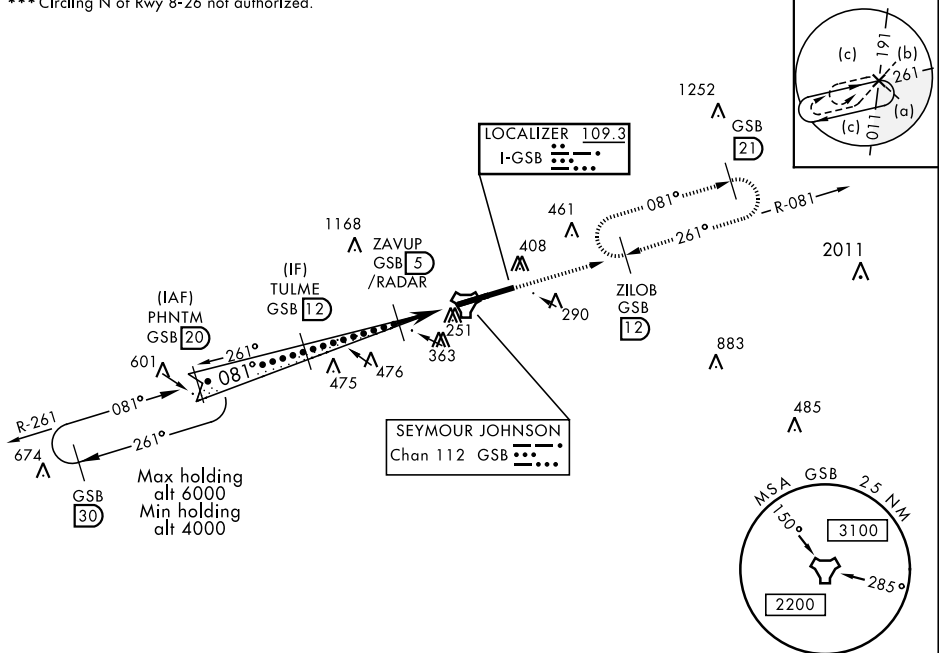
T * When ALS inop, increase RVR to 40 and vis to $\frac{3}{4}$ mile.
** When ALS inop, increase vis to $1\frac{3}{8}$ miles.

ALSF-1

MISSED APPROACH: Climb to 2300 via GSB R-081 to ZILOB and hold.

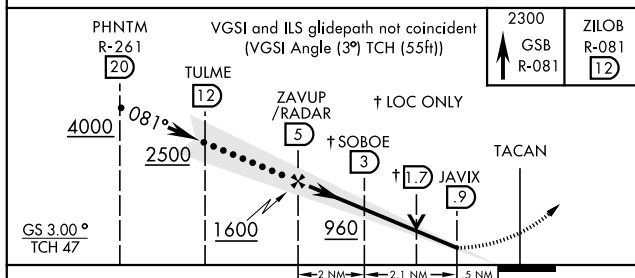
ATIS ★ 317.625	SEYMOUR JOHNSON APP CON 258°-110° 123.7 290.9 111°-257° 119.7 273.6	SEYMOUR JOHNSON TOWER ★ 126.25 370.875	GND CON 138.1 275.8	CLNC DEL 128.025 270.8
--------------------------	---	--	-------------------------------	----------------------------------

*** Circling N of Rwy 8-26 not authorized.

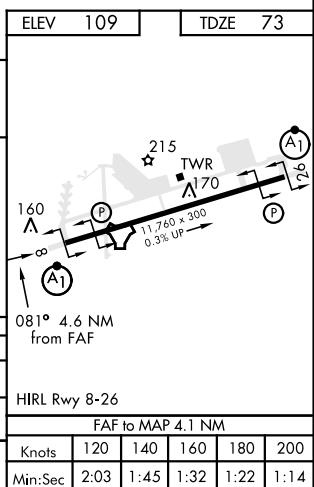


RADAR or DME REQUIRED

EMERG SAFE ALT 100 NM 3700



CATEGORY	C	D	E
S-ILS 8 *	273/24	200 (200-½)	
S-LOC 8 **	560/50	487 (500-1)	
C CIRCLING ***	680-1½ 571 (600-½)	700-2 591 (600-2)	760-2¼ 651 (700-2¼)



GOLDSBORO, NORTH CAROLINA

35°20'N-77°58'W

SEYMOUR JOHNSON AFB (KGSB)

Amdt 7 07DEC17

HI-ILS or LOC Z RWY 8

SE-2, 31 DEC 2020 to 28 JAN 2021

SE-2, 31 DEC 2020 to 28 JAN 2021