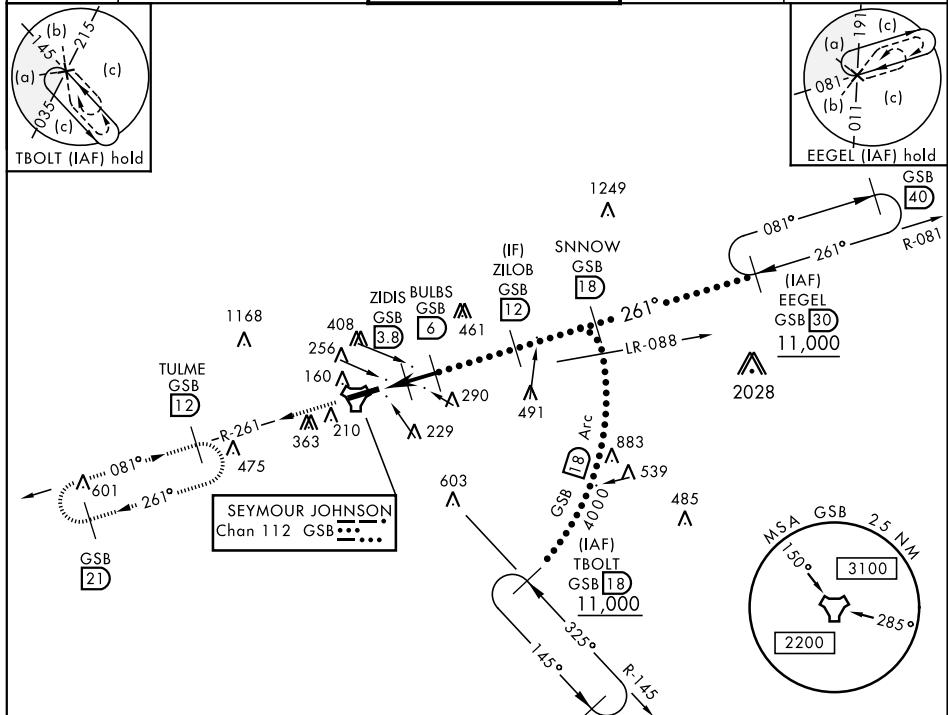


HI-TACAN Z RWY 26

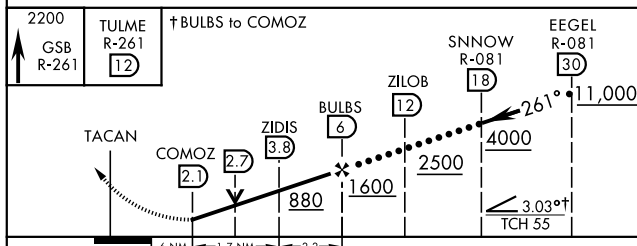
TACAN GSB Chan 112	APCH CRS 261°	Rwy ldg 11,760 TDZE 109 Arprt Elev 109	JAL-169 [USAF]	SEYMOUR JOHNSON AFB (KGSB)
------------------------------	-------------------------	---	----------------	----------------------------

<p>▼ * When ALS inop, increase vis to 1¼ miles. ** Circling N of Rwy 8-26 not authorized.</p>	<p>ALSF-1 (A1)</p>	<p>MISSED APPROACH: Climb to 2200 via GSB R-261 to TULME and hold.</p>
---	------------------------	--

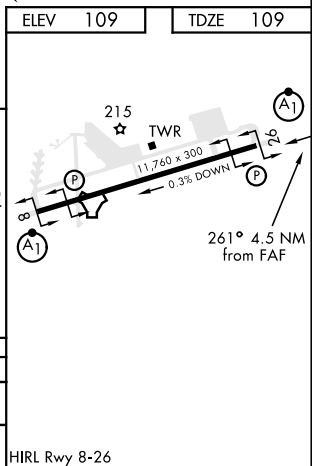
<p>ATIS ★ 317.625</p>	<p>SEYMOUR JOHNSON APP CON 258°-110° 123.7 290.9 111°-257° 119.7 273.6</p>	<p>SEYMOUR JOHNSON TOWER ★ 126.25 370.875</p>	<p>GND CON 138.1 275.8</p>	<p>CLNC DEL 128.025 270.8</p>
----------------------------------	--	--	---------------------------------------	--



EMERG SAFE ALT 100 NM 3700



CATEGORY	C	D	E
S-26*	540/40	431 (500-¾)	
CIRCLING**	680-1½ 571 (600-1½)	700-2 591 (600-2)	760-2¼ 651 (700-2¼)



HI-TACAN Z RWY 26