

GOLDSBORO, NORTH CAROLINA

TACAN GSB Chan <b>112</b>	APCH CRS <b>081°</b>	Rwy ldg <b>11,760</b> TDZE <b>73</b> Arprt Elev <b>109</b>	JAL-169 [USAF]	SEYMOUR JOHNSON AFB (KGSB)
------------------------------	-------------------------	--	----------------	----------------------------

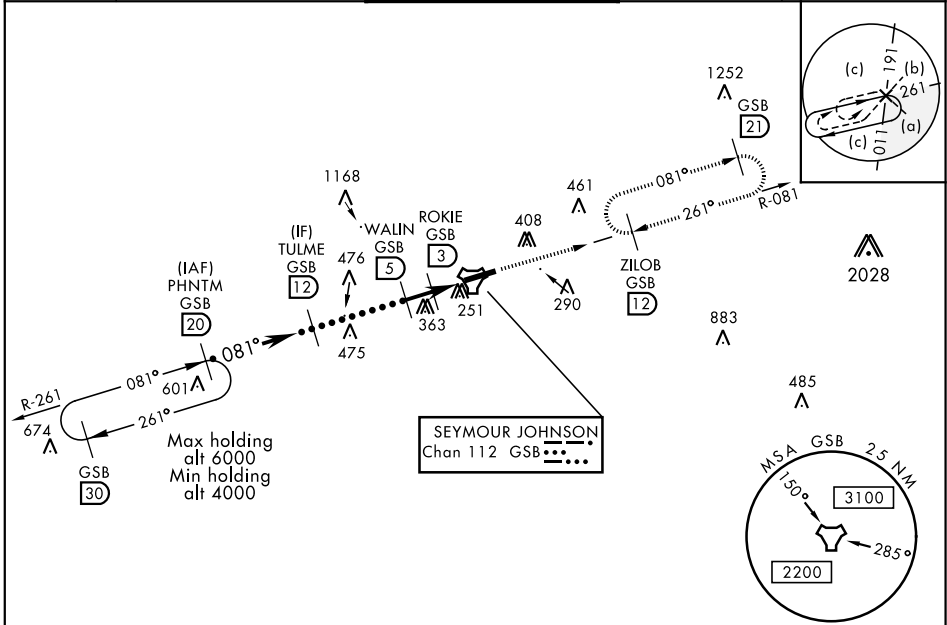
HI-TACAN Z RWY 8

▼ \* When ALS inop, increase vis to 1½ miles.  
\*\* Circling N of Rwy 8-26 not authorized.

ALSF-1

MISSED APPROACH: Climb to 2300 via GSB TACAN R-081 to ZILOB and hold.

ATIS ★ <b>317.625</b>	SEYMOUR JOHNSON APP CON 258°-110° <b>123.7 290.9</b> 111°-257° <b>119.7 273.6</b>	SEYMOUR JOHNSON TOWER ★ <b>126.25 370.875</b>	GND CON <b>138.1 275.8</b>	CLNC DEL <b>128.025 270.8</b>
--------------------------	---	--	-------------------------------	----------------------------------



EMERG SAFE ALT 100 NM 3700

† WAIN to ZESIX

2300 GSB R-081

ZILOB GSB (12)

160 A

215 TWR

170 A

11,760 ± 300

0.3% UP

081° 4.6 NM from FAF

180 A

HIRL Rwy 8-26

CATEGORY	C	D	E
S-8 *	560/50	487	(500-1)
CIRCLING **	680-1½ 571 (600-1½)	700-2 591 (600-2)	760-2¼ 651 (700-2¼)

SE-2, 31 DEC 2020 to 28 JAN 2021

SE-2, 31 DEC 2020 to 28 JAN 2021