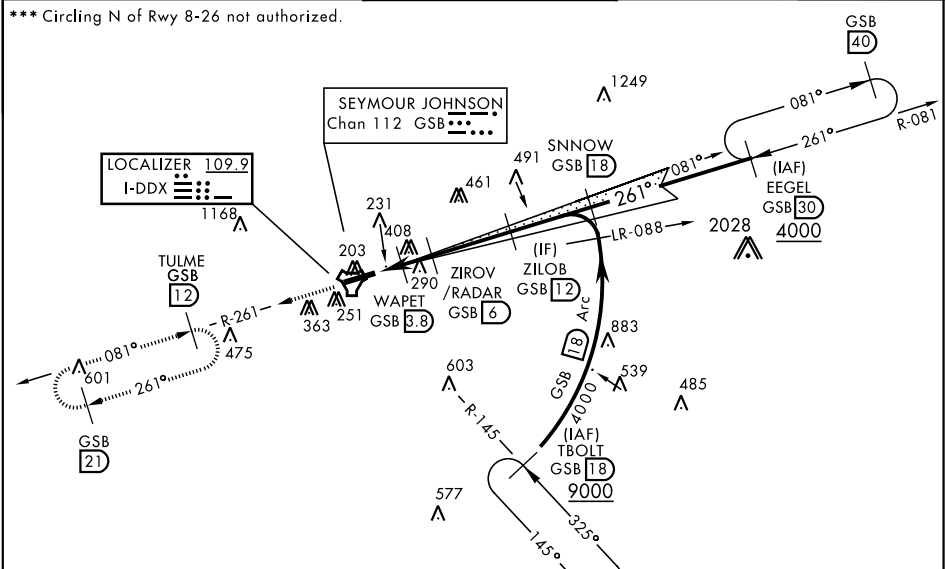


GOLDSBORO, NORTH CAROLINA

ILS or LOC Y RWY 26

LOC I-DDX <b>109.9</b>	APCH CRS <b>261°</b>	Rwy ldg <b>11,760</b> TDZE <b>109</b> Arprt Elev <b>109</b>	AL-169 [USAF]	SEYMOUR JOHNSON AFB (KGSB)
* When ALS inop, increase RVR to 40 and vis to ¾ mile. ** When ALS inop, increase CAT AB RVR to 55 and vis to 1 mile, CAT CDE RVR to 60 and vis to 1 ½ miles.			ALSF-1	MISSED APPROACH: Climb to 2200 via GSB TACAN R-261 to TULME and hold.
ATIS ★ <b>317.625</b>	SEYMOUR JOHNSON APP CON 258°-110° <b>123.7 290.9</b> 111°-257° <b>119.7 273.6</b>	SEYMOUR JOHNSON TOWER ★ <b>126.25 370.875</b>	GND CON <b>138.1 275.8</b>	CLNC DEL <b>128.025 270.8</b>



RADAR or DME REQUIRED  
EMERG SAFE ALT 100 NM 3700

ELEV 109

TDZE 109

HIRL Rwy 8-26

FAF to MAP 3.9 NM					
Knots	60	90	120	150	180
Min:Sec	3:54	2:36	1:57	1:34	1:18

GOLDSBORO, NORTH CAROLINA 35°20'N-77°58'W SEYMOUR JOHNSON AFB (KGSB)

Amtd 8 07DEC17

ILS or LOC Y RWY 26

SE-2, 31 DEC 2020 to 28 JAN 2021

SE-2, 31 DEC 2020 to 28 JAN 2021