
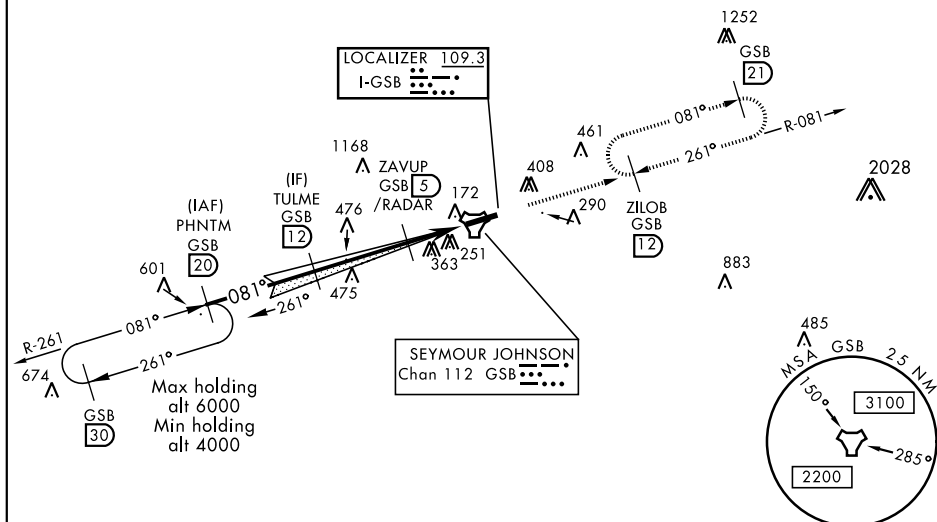


ILS or LOC Y RWY 8

LOC I-GSB 109.3	APCH CRS 081°	Rwy Idg 11,760 TDZE 73 Arpt Elev 109	AL-169 [USAF]	SEYMOUR JOHNSON AFB	(KGSB)
▽ * When ALS inop, increase RVR to 40 and vis to ¾ mile. ** When ALS inop, increase CAT AB RVR to 55 and vis to 1 mile, CAT CDE vis to 1 ½ miles.			ALSF-1 	MISSED APPROACH: Climb to 2300 via GSB R-081 to ZLOB and hold.	
ATIS ★ 317.625	SEYMOUR JOHNSON APP CON 258°-110° 123.7 290.9 111°-257° 119.7 273.6	SEYMOUR JOHNSON TOWER ★ 126.25 370.875	GND CON 138.1 275.8	CLNC DEL 128.025 270.8	

*** Circling N of Rwy 8-26 not authorized.



RADAR or DME REQUIRED

EMERG SAFE ALT 100 NM 3700

