

GOLDSBORO, NORTH CAROLINA

RNAV (GPS) RWY 26

APCH CRS	Rwy Idg	11,760
261°	TDZE	109
	Arpt Elev	109

AL-169 (USAF)

SEYMOUR JOHNSON AFB (KGSB)

**⚠** \* When ALS inop, increase vis to 1 3/8 miles.  
\*\* When ALS inop, increase CAT AB RVR to 55, vis to 1 mile; CAT CDE vis to 1 1/4 miles.  
\*\*\* Circling NA N of Rwy 8-26.

**ALSF-1**

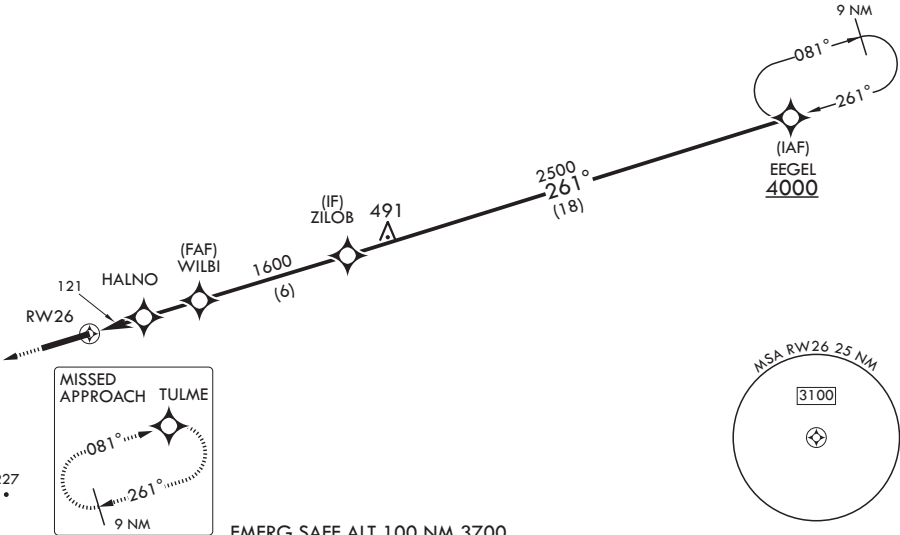


**MISSED APPROACH:** Climb to 2200 direct TULME and hold.

ATIS★ 317.625	APP CON 119.7 273.6 111° -257° 123.7 290.9 258° -110°	TOWER 126.25 370.875	GND CON 138.1 275.8	CLNC DEL 128.025 270.8
------------------	---	-------------------------	------------------------	---------------------------


DME/DME RNP -0.3 NA

For uncompensated Baro-VNAV systems, procedure NA below -15°C (5°F) or above 53°C (128°F).



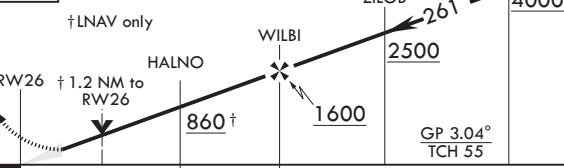
EMERG SAFE ALT 100 NM 3700

**2200** **TULME**



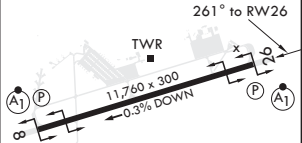
**ELEV 109** **TDZE 109**

**† LNAV only**



**GP 3.04° TCH 55**

**261° to RWY 26**



CATEGORY	A	B	C	D	E
LNAV/VNAV DA*	510/40	401	(500-3/4)		
LNAV MDA**	540/24 431 (500-1/2)	540/40 431 (500-3/4)			
<b>C</b> CIRCLING***	620-1 511 (600-1)	680-1 1/2 571 (600-1 1/2)	700-2 591 (600-2)	760-2 1/4 651 (700-2 1/4)	

HIRL all Rwys

GOLDSBORO, NORTH CAROLINA

35°20'N - 77°58'W

SEYMOUR JOHNSON AFB (KGSB)

Amtr 4 02JAN20

RNAV (GPS) RWY 26

SE-2, 31 DEC 2020 to 28 JAN 2021

SE-2, 31 DEC 2020 to 28 JAN 2021