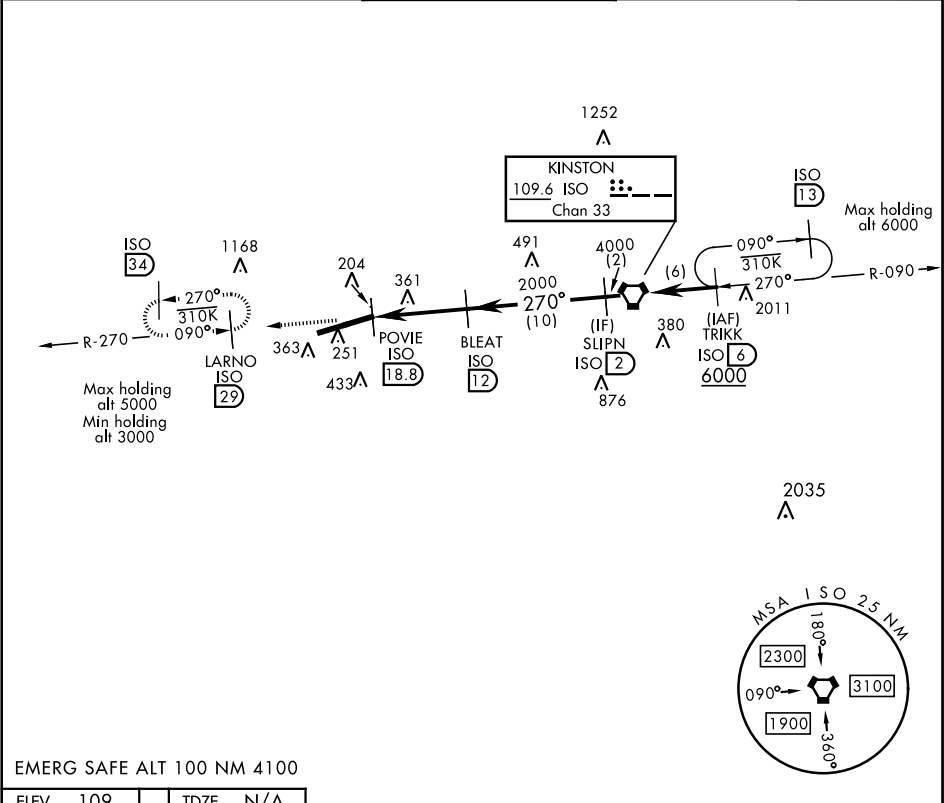
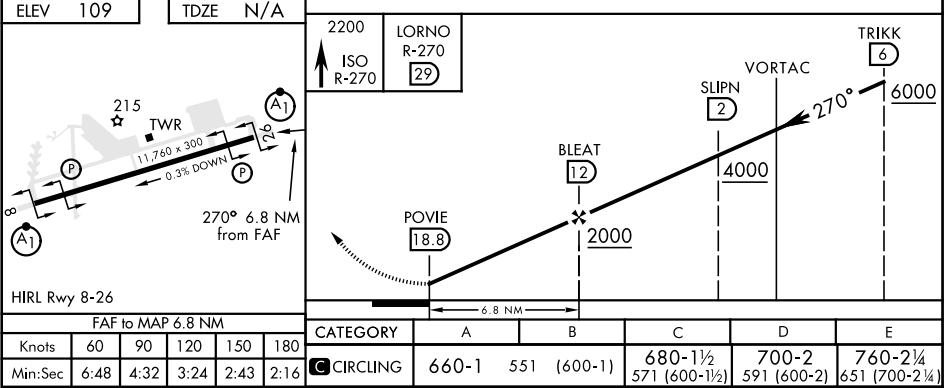


TACAN-A

KINSTON ISO 109.6 Chan 33	APCH CRS 270°	Rwy Idg TDZE Arprt Elev N/A N/A 109	AL-169 [USAF]	SEYMOUR JOHNSON AFB (KGSB)
Circling not authorized from RWY 8 clockwise to RWY 26.			MISSED APPROACH: Climb straight on VORTAC ISO R-270 to 29 DME (LARNO) and hold; continue climb and hold to 3000.	
ATIS ★ 317.625	SEYMOUR JOHNSON APP CON 258°-110° 123.7 290.9 111°-257° 119.7 273.6	SEYMOUR JOHNSON TOWER ★ 126.25 370.875	GND CON 138.1 275.8	CLNC DEL 128.025 270.8



EMERG SAFE ALT 100 NM 4100



TACAN-A

SE-2, 31 DEC 2020 to 28 JAN 2021

SE-2, 31 DEC 2020 to 28 JAN 2021