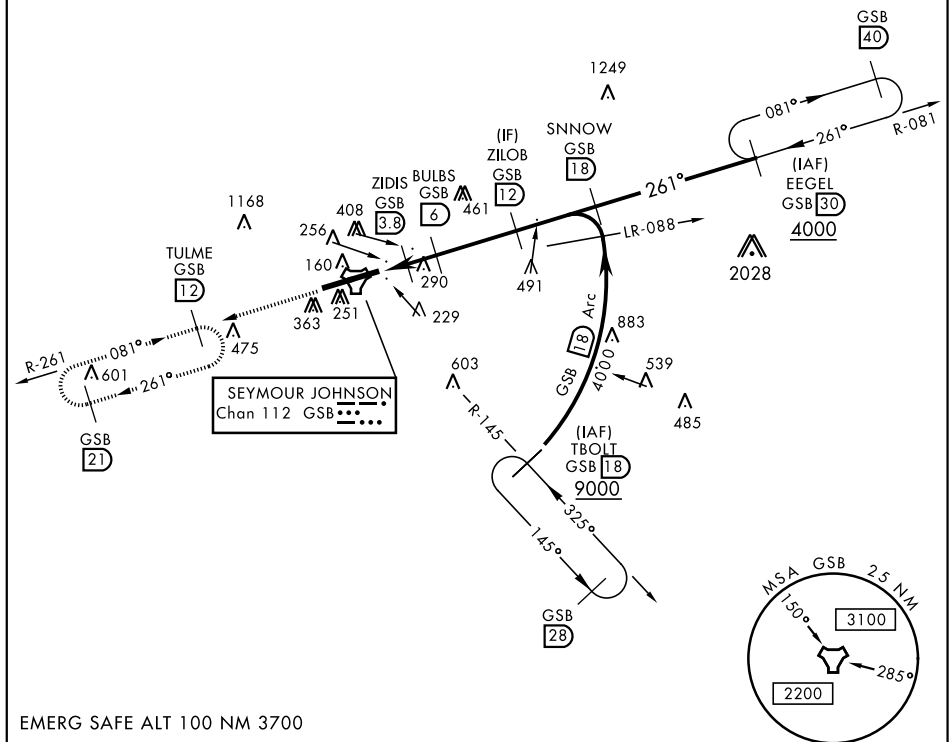


GOLDSBORO, NORTH CAROLINA

TACAN Y RWY 26

TACAN GSB Chan 112		APCH CRS 261°		Rwy Idg 11,760 TDZE 109 Arpt Elev 109		AL-169 [USAF]		SEYMOUR JOHNSON AFB (KGSB)	
<div> <div>▼</div> <div> <p>* When ALS inop, increase CAT AB RVR to 55, vis to 1 mile, CAT CDE vis to 1¼ miles.</p> <p>** Circling N of Rwy 8-26 not authorized.</p> </div> </div>				<div> <div>ALSF-1</div> <div> <div>(A1)</div> <div> </div> </div> </div>		<div> <div>MISSED APPROACH: Climb to 2200 via GSB R-261 to TULME and hold.</div> </div>			
<div> <div>ATIS ★</div> <div>317.625</div> </div>		<div> <div>SEYMOUR JOHNSON APP CON</div> <div>258°-110° 123.7 290.9</div> <div>111°-257° 119.7 273.6</div> </div>		<div> <div>SEYMOUR JOHNSON TOWER ★</div> <div>126.25 370.875</div> </div>		<div> <div>GND CON</div> <div>138.1 275.8</div> </div>		<div> <div>CLNC DEL</div> <div>128.025 270.8</div> </div>	



EMERG SAFE ALT 100 NM 3700

ELEV 109 TDZE 109

215 TWR 11,760 x 300 0.3% DOWN 261° 4.5 NM from FAF

3.03° TCH 55

↑ BULBS to COMOZ

TACAN

COMOZ 2.1 2.7 3.8

BULBS 6

ZIDIS 3.8

ZILOB 12

SNOW R-081 18

EGL R-081 30

4000 4000

CATEGORY	A	B	C	D	E
S-26 *	540/24 431 (500-½)	540/40 431 (500-¾)			
CIRCLING**	620-1 511 (600-1)	680-1½ 571 (600-1½)	700-2 591 (600-2)	760-2¼ 651 (700-2¼)	

HIRL Rwy 8-26

GOLDSBORO, NORTH CAROLINA

35° 20'N-77° 58'W

SEYMOUR JOHNSON AFB (KGSB)

TACAN Y RWY 26

SE-2, 31 DEC 2020 to 28 JAN 2021

SE-2, 31 DEC 2020 to 28 JAN 2021