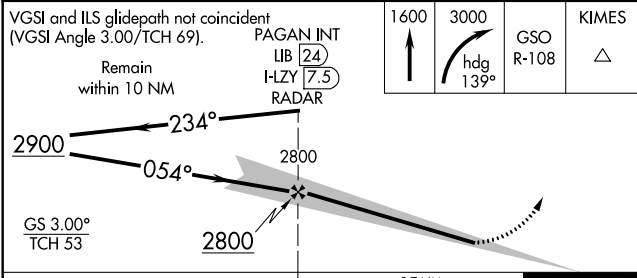
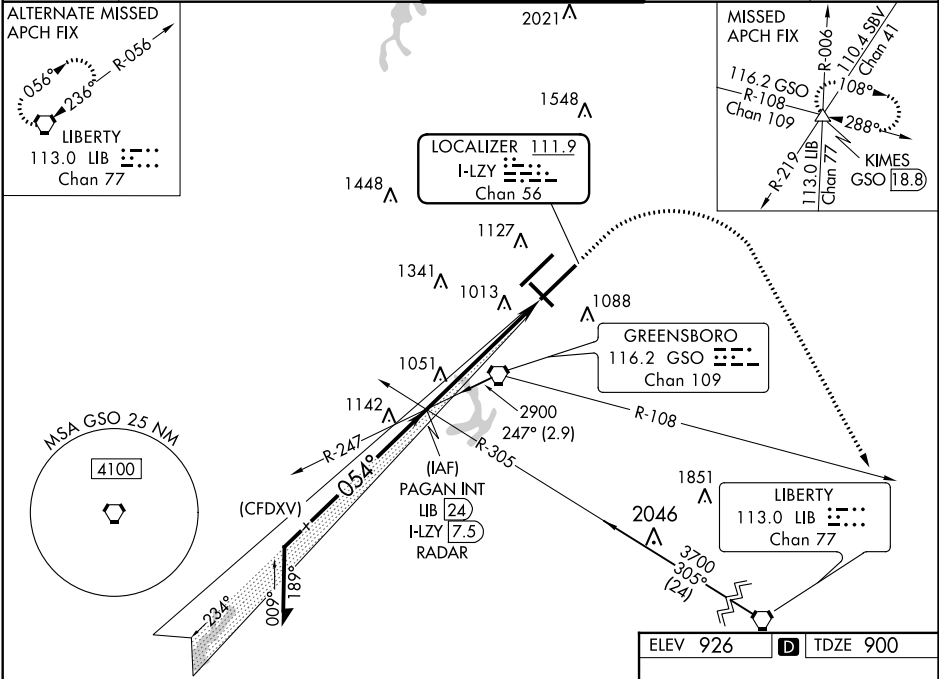


LOC/DME I-LZY	APP CRS	Rwy Idg	10001
111.9	054°	TDZE	900
Chan 56		Apt Elev	926

ILS RWY 5R (SA CAT II)
PIEDMONT TRIAD INTL (GSO)

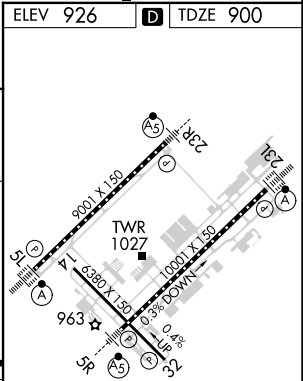
<p>Simultaneous approach authorized. REDUCED LIGHTING: Requires specific OPSPEC, MSPEC, or LOA approval and use of autoland or HUD to touchdown.</p>	<p>MALSR</p>	<p>MISSED APPROACH: Climb to 1600 then climbing right turn to 3000 on heading 139° and GSO VORTAC R-108 to KIMES INT/ GSO 18.8 DME and hold.</p>
--	--------------	--

D-ATIS	GREENSBORO APP CON	GREENSBORO TOWER	GND CON	CLNC DEL
128.55	124.35 269.225 (250°-049°) 126.6 327.075 (050°-249°)	119.1 290.325	121.9 348.6	121.75



CATEGORY	A	B	C	D
S-ILS 5R		RA 122/12 100 DA 1000		

SA CATEGORY II ILS - SPECIAL AIRCREW
& AIRCRAFT CERTIFICATION REQUIRED



TDZ/CL Rwy 5L, 23R and 23L
REIL Rwy 32
HIRL Rwy 14-32, 5R-23L and 5L-23R