

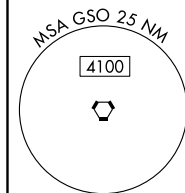
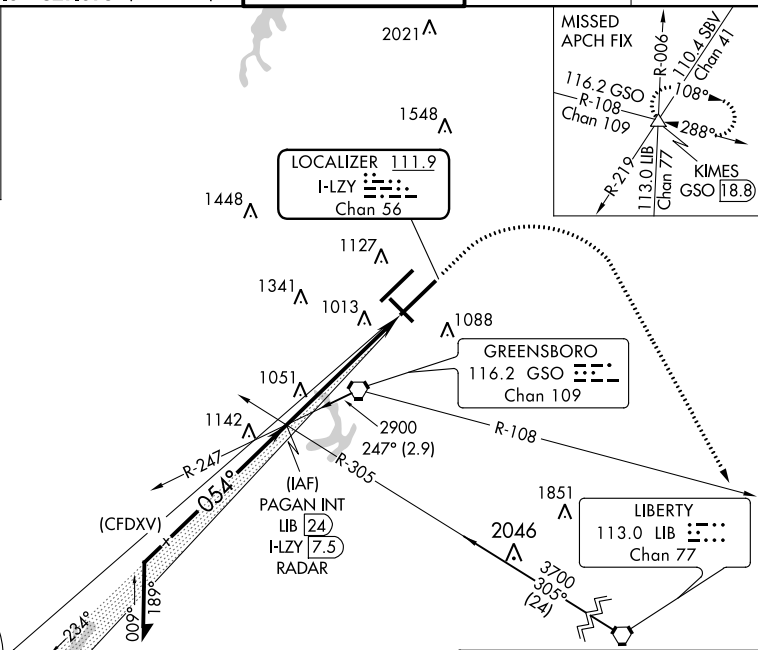
ILS or LOC RWY 5R  
PIEDMONT TRIAD INTL (GSO)

**MISSED APPROACH:** Climb to 1600 then climbing right turn to 3000 on heading 139° and GSO VORTAC R-108 to KIMES INT/GSO 18.8 DME and hold

ALTERNATE MISSED  
APCH FIX

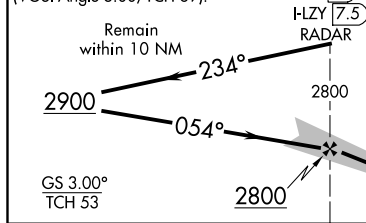
056°  
236°—R-056

LIBERTY  
LIB ::::  
113.0  
Chan 77

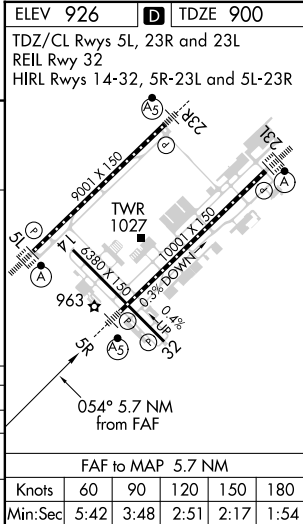


1600 ↑	3000 hdg 139°	GSO R-108	KIMES △
-----------	---------------------	--------------	------------

\*IQC only



	A		B		C		D	
S-ILS 5R **	1100/24		200 (200-½)					
S-LOC 5R	1320/24 420 (400-½)		1320/40 420 (400-¾)					
<b>C</b> CIRCLING	1440-1 514 (600-1)		1700-2¼ 774 (800-2¼)		1700-2½ 774 (800-2½)			



SE-2, 31 DEC 2020 to 28 JAN 2021