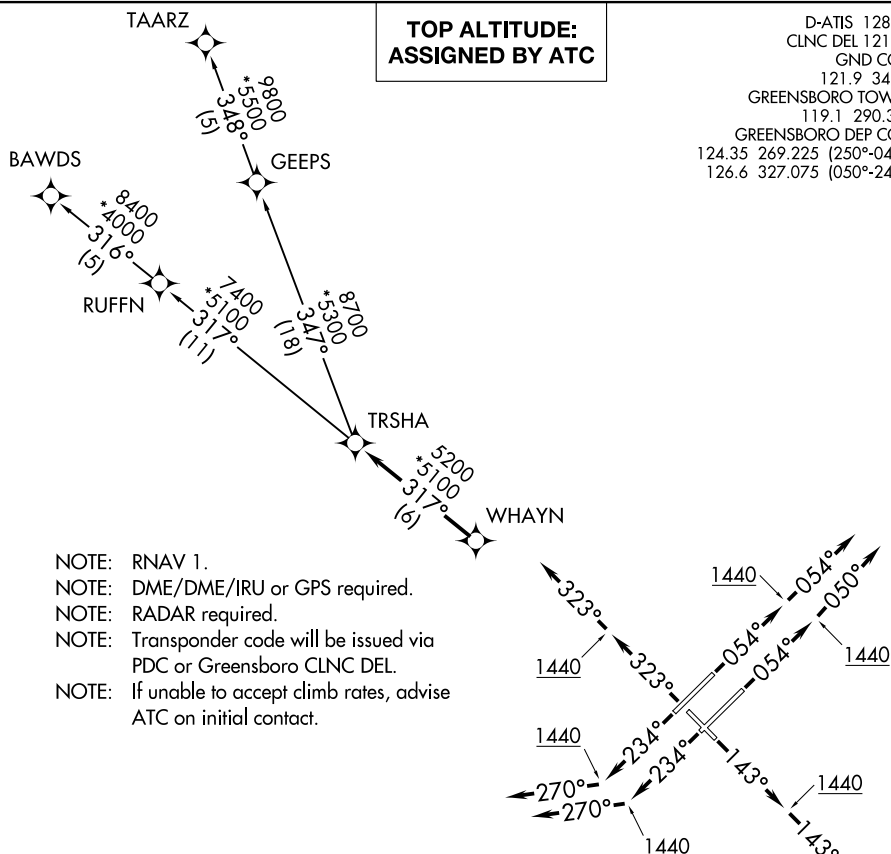


## TRSHA ONE DEPARTURE (RNAV)

GREENSBORO, NORTH CAROLINA



- NOTE: RNAV 1.
- NOTE: DME/DME/IRU or GPS required.
- NOTE: RADAR required.
- NOTE: Transponder code will be issued via PDC or Greensboro CLNC DEL.
- NOTE: If unable to accept climb rates, advise ATC on initial contact.

## TAKEOFF MINIMUMS

Rwys 5L/R, 14, 23L/R, 32: Standard with minimum climb of 500' per NM to 1440.

NOTE: Chart not to scale.

## DEPARTURE ROUTE DESCRIPTION

- TAKEOFF RWY 5L: Climb heading 054° to 1440, then on heading 054°. Thence. . .  
 TAKEOFF RWY 5R: Climb heading 054° to 1440, then on heading 050°. Thence. . .  
 TAKEOFF RWY 14: Climb heading 143° to 1440, then on heading 143°. Thence. . .  
 TAKEOFF RWY 23L/R: Climb heading 234° to 1440, then on heading 270°. Thence. . .  
 TAKEOFF RWY 32: Climb heading 323° to 1440, then on heading 323°. Thence. . .

...expect RADAR vectors to WHAYN, then on track 317° to TRSHA, then on assigned transition. Maintain altitude assigned by ATC. Expect clearance to filed altitude within ten (10) minutes after departure.

BAWDS TRANSITION (TRSHA1.BAWDS)

TAARZ TRANSITION (TRSHA1.TAARZ)

TRSHA ONE DEPARTURE (RNAV)

(TRSHA1.TRSHA) 05JAN17

GREENSBORO, NORTH CAROLINA  
PIEDMONT TRIAD INTL (GSO)