

APP CRS
224°

Rwy Idg
TDZE
Apt Elev

8000
937
955

RNAV (GPS) RWY 23

DONALDSON FIELD (GYH)

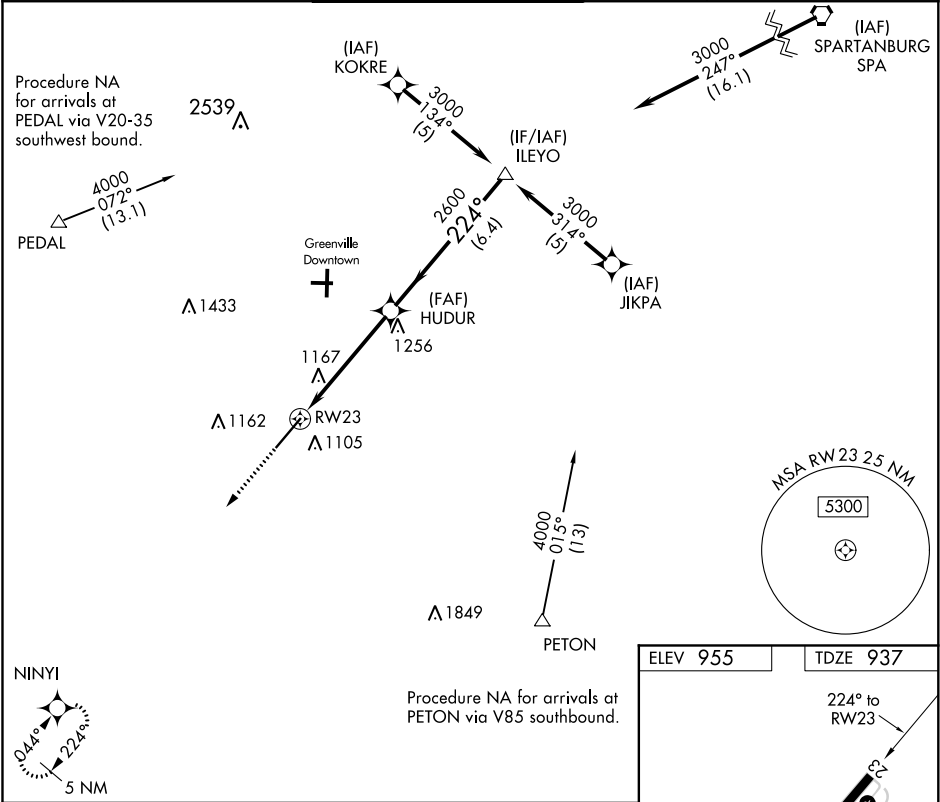
▼

NA

If local altimeter setting not received, use Greer altimeter setting and increase all MDAs 40 feet. VDP NA when using Greer altimeter setting. Helicopter visibility reduction below ¾ statute mile NA. DME/DME RNP-0.3 NA.

MISSED APPROACH:
Climb to 3000 direct NINYI and hold.

AWOS-3 127.325	GREER APP CON ★ 118.8 270.275	DONALDSON TOWER ★ 133.325 (CTAF) 0 269.25	GND CON 121.4	CLNC DEL 121.4	UNICOM 122.7
-------------------	----------------------------------	--	------------------	-------------------	-----------------



3000

NINYI

VGSI and descent angles not coincident (VGSI Angle 4.14/TCH 95).

Procedure Turn NA

HUDUR

2600

3000

224°

1.4 NM to RW23

3.05° TCH 52

1.4 NM

3.7 NM

6.4 NM

CATEGORY	A	B	C	D
LNAV MDA	1420-1	483 (500-1)	1420-1¼ 483 (500-1¼)	1420-1½ 483 (500-1½)
CIRCLING	1420-1	465 (500-1)	1480-1½ 525 (600-1½)	1520-2 565 (600-2)

ELEV 955

TDZE 937

224° to RW23

0.3% DOWN

8000 1150

0.6% UP

TWR 1038 ±

HIRL Rwy 5-23 0