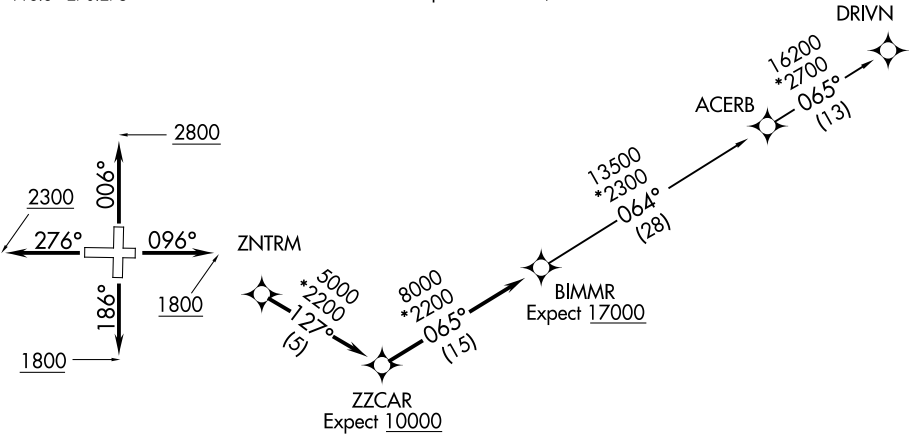


ATIS ★
127.075
GND CON
121.25
GREENVILLE TOWER ★
119.9 257.7
UNICOM
122.95
GREER DEP CON ★
118.8 270.275

NOTE: Do not exceed 250K until advised by ATC.
NOTE: For turbojets only.
NOTE: RNAV 1.
NOTE: RADAR required.
NOTE: DME/DME/IRU or GPS required.
NOTE: If unable to accept climb rates, advise ATC on initial contact.

TOP ALTITUDE:
3000



TAKEOFF MINIMUMS

- Rwy 1, 19: Standard.
Rwy 10: 300-1 or standard with minimum climb of 355' per NM to 1300.
Rwy 28: 300-2½ or standard with minimum climb of 220' per NM to 1500, or alternatively, with standard takeoff minimums and a normal 200' per NM climb gradient, takeoff must occur no later than 1900' prior to DER.

NOTE: Chart not to scale.

▼

DEPARTURE ROUTE DESCRIPTION

TAKEOFF ALL RUNWAYS: Climb on assigned heading for RADAR vectors to ZNTRM, then on depicted route to BIMMR, thence. . . .

. . . on assigned transition. Maintain 3000. Expect clearance to filed altitude within 10 minutes after departure.

- TAKEOFF RUNWAY 1: Climb heading 006° to 2800 before turning west or northwest.
TAKEOFF RUNWAY 10: Climb heading 096° to 1800 before turning west or northwest.
TAKEOFF RUNWAY 19: Climb heading 186° to 1800 before turning north.
TAKEOFF RUNWAY 28: Climb heading 276° to 2300 before turning north or northwest.

ACERB TRANSITION (BIMMR2.ACERB)
DRIVN TRANSITION (BIMMR2.DRIVN)