


LOC/DME I-MYR	APP CRS	Rwy Idg	9503
109.5	177°	TDZE	23
Chan 32		Apt Elev	25

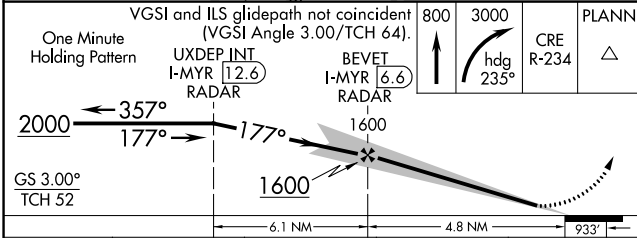
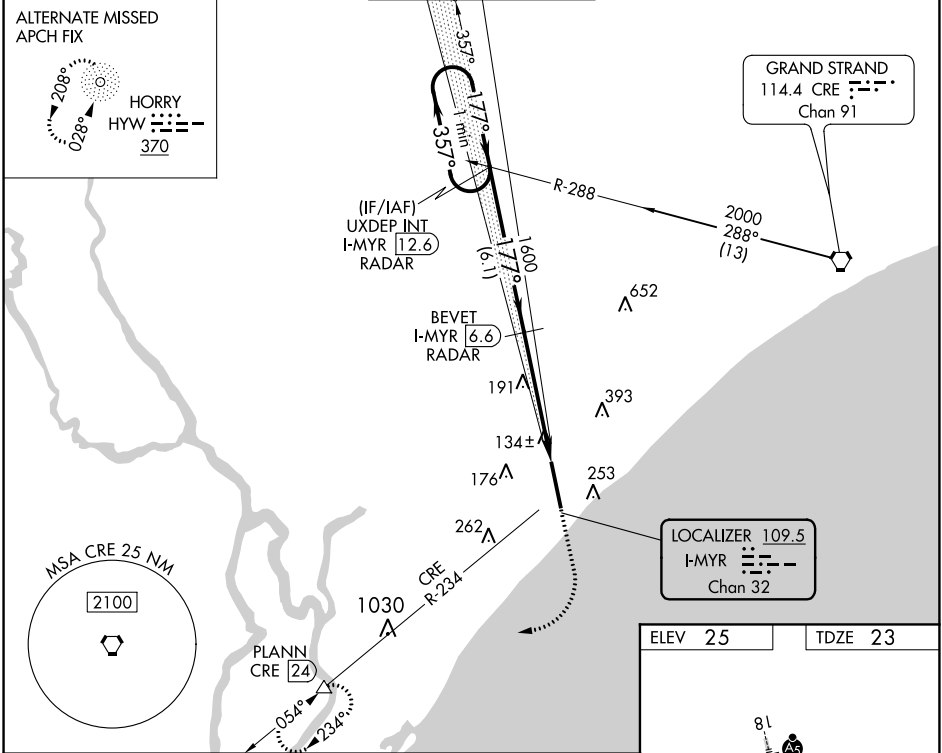
ILS RWY 18 (SA CAT I & II)

MYRTLE BEACH INTL (MYR)

▼ DME required. SA CAT I: Requires specific OPSPEC, MSPEC, or LOA approval and use of HUD to DH.
▲ SA CAT II: Reduced lighting: Requires specific OPSPEC, MSPEC, or LOA approval and use of autoland or HUD to touchdown.

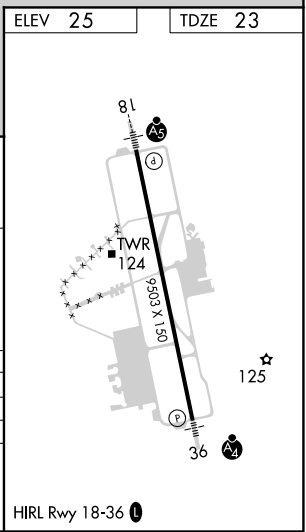
MALSR

MISSED APPROACH: Climb to 800 then climbing right turn to 3000 on heading 235° and CRE VORTAC R-234 to PLANN/24 DME and hold.

ATIS 123.925	MYRTLE BEACH APP CON ★ (171° - 321°) 127.4 257.95 (322° - 170°) 119.2 350.3	MYRTLE BEACH TOWER ★ 128.45 (CTAF) 0 259.3	GND CON 120.3 275.8	CLNC DEL 120.3	UNICOM 122.95
------------------------	---	--	-------------------------------	--------------------------	-------------------------



CATEGORY	A	B	C	D
S-ILS 18		SA CAT I RA 156/14	150 DA 173	
S-ILS 18		SA CAT II RA 101/12	100 DA 123	

**SA CATEGORY I & II SPECIAL AIRCREW
& AIRCRAFT CERTIFICATION REQUIRED**



SE-2, 31 DEC 2020 to 28 JAN 2021

SE-2, 31 DEC 2020 to 28 JAN 2021