

SUMTER, SOUTH CAROLINA

HI-ILS or LOC Z RWY 22R

LOC I-JWU	APCH CRS	Rwy Idg	22R 22L
<u>108.7</u>	223°	10,014	8014
		TDZE	240 235
		Arpt Elev	241 241

JAL-409 [USAF]

SHAW AFB (KSSC)

RADAR or DME Required.

T * When ALS inop, increase RVR to 40 and vis to $\frac{3}{4}$ mile.

** When ALS inop, increase vis to 1 ¼ miles.

ALSF-1



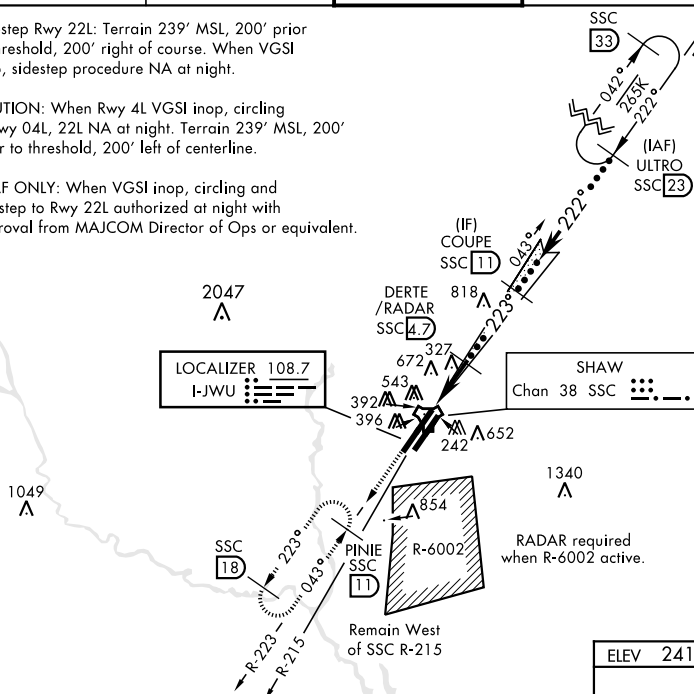
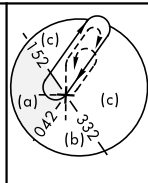
MISSED APPROACH: Climbing to 2000, intercept SSC TACAN R-223 to PINIE and hold.

ATIS ★	SHAW APP CON	SHAW TOWER ★	GND CON	CLNC DEL
132.125 270.1	125.4 318.1	126.65 254.25	126.1 275.8	126.1 275.8

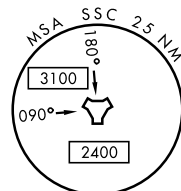
Sidestep Rwy 22L: Terrain 239' MSL, 200' prior to threshold, 200' right of course. When VGSI inop, sidestep procedure NA at night.

CAUTION: When Rwy 4L VGSI inop, circling to Rwy 04L, 22L NA at night. Terrain 239' MSL, 200' prior to threshold, 200' left of centerline.

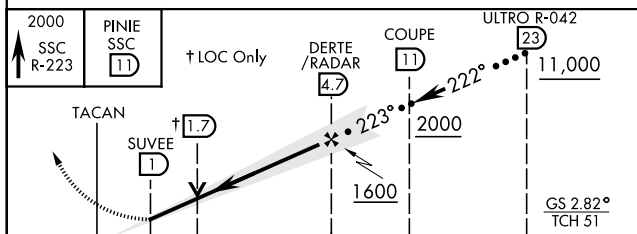
USAF ONLY: When VGSI inop, circling and sidestep to Rwy 22L authorized at night with approval from MAJCOM Director of Ops or equivalent.




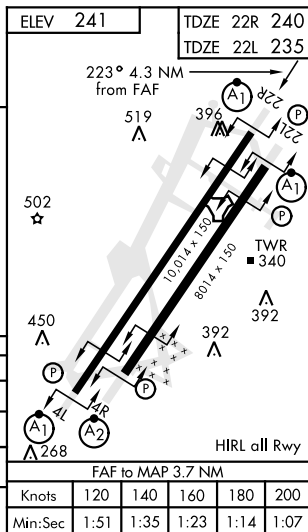
RADAR required
when R-6002 active.



EMERG SAFE ALT 100 NM 3800



	6 NM	3.7 NM	
CATEGORY	C	D	E
S-ILS 22R *	440/24	200 (200-½)	
S-LOC 22R **	660/40	420 (500-¾)	
SIDESTEP ** 22L	660-1¼	425 (500-1¼)	
 CIRCLING	1000-2¼ 759 (800-2¼)	1000-2½ 759 (800-2½)	1000-2¾ 759 (800-2¾)



SUMTER, SOUTH CAROLINA

33°58'N-80°28'W

SHAW AFB (KSSC)

Amdt 1 10OCT19

HI-ILS or LOC Z RWY 22R

SE-2, 31 DEC 2020 to 28 JAN 2021