

TACAN SSC
Chan 38APCH CRS
222°

22R	22L
Rwy Ldg	10,014 8014
TDZE	240 235
Arpt Elev	241 241

JAL-409 [USAF]

SHAW AFB (KSSC)

- ▼ * When ALS inop, increase vis to 1½ miles.
 ** When ALS inop, increase vis to 1¾ miles.



MISSED APPROACH: Climbing to 2000, intercept
 SSC TACAN R-223 to PINIE and hold.

ATIS ★
 132.125 270.1

SHAW APP CON
 125.4 318.1

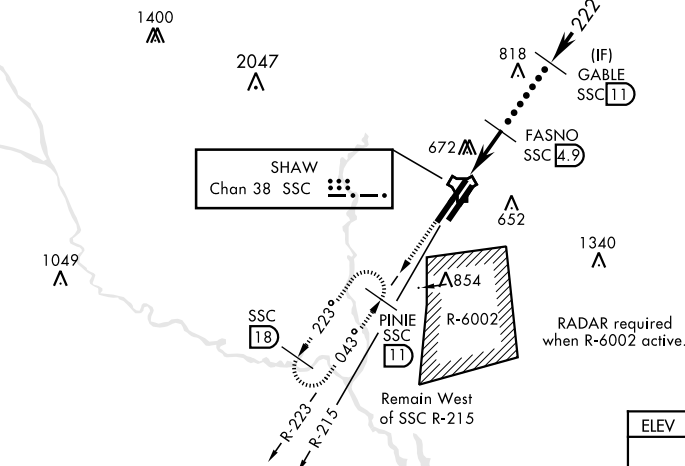
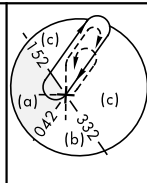
SHAW TOWER ★
 126.65 254.25

GND CON
 126.1 275.8

CLNC DEL
 126.1 275.8

USAF Only: When Rwy 4L VGSi inop, circling
 to Rwy 4L at night requires approval from
 MAJCOM director of Ops or equivalent.
 Terrain 242' MSL, 200' prior to threshold.

USAF Only: When VGSi inop, sidestep to
 Rwy 22L, circling to Rwy 22L at night requires
 approval from MAJCOM Director of Ops or equivalent.
 Terrain 239' MSL, 200' prior to threshold, 200' right of course.



EMERG SAFE ALT 100 NM 3800

2000 SSC R-223	PINIE SSC 11	CHILI R-042	11,000
TACAN	REBIE 1.0	FASNO 4.9	GABLE 11
222°	222°	222°	222°
0.6	3.9 NM		
CATEGORY	C	D	E
S-22R*	760/55	520 (600-1)	
SIDESTEP 22L**	760/55	505 (600-1)	
CIRCLING	1000-2¼ 759 (800-2¼)	1000-2½ 759 (800-2½)	1000-2¾ 759 (800-2¾)

