

SUMTER, SOUTH CAROLINA

ILS or LOC Y RWY 22R

LOC I-JWU	APCH CRS	Rwy Idg	10,014	8014	22L	ILS of Rwy 1 RWY 22R
<u>108.7</u>	<u>223°</u>	TDZE	240	235		
		Arpt Elev	241	241		
					AL-409 [USAF]	SHAW AFB (KSSC)

RADAR or DME Required.

T * When ALS inop, increase RVR to 40 and vis to $\frac{3}{4}$ mile.
 ** When ALS inop, increase CAT AB RVR to 55 and vis to 1 mile, CAT CDE vis to $1\frac{1}{4}$ miles.

ALSF-1



MISSED APPROACH: Climbing to 2000, intercept SSC TACAN R-223 to PINIE and hold.

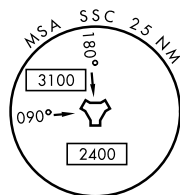
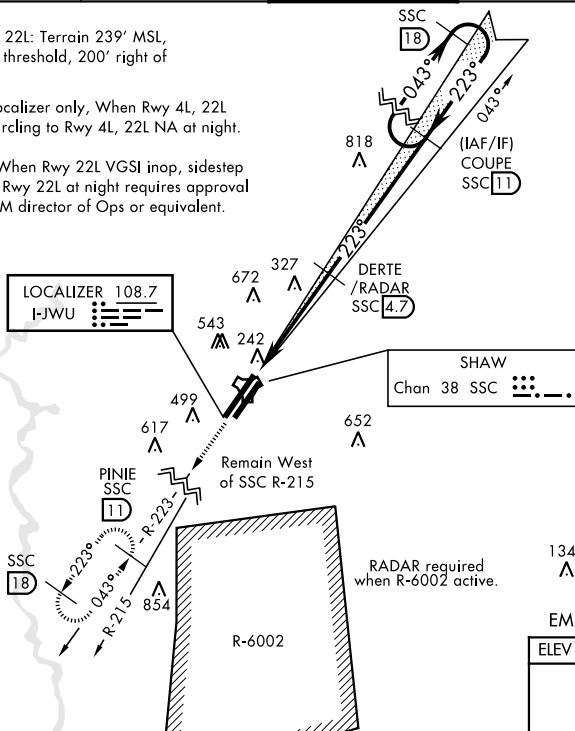
ATIS ★	SHAW APP CON	SHAW TOWER ★	GND CON	CLNC DEL
132.125 270.1	125.4 318.1	126.65 254.25	126.1 275.8	126.1 275.8

Sidestep Rwy 22L: Terrain 239' MSL, 200' prior to threshold, 200' right of course.

CAUTION: Localizer only, When Rwy 4L, 22L VGSI inop, circling to Rwy 4L, 22L NA at night.

USAF Only: When Rwy 22L VGSi inop, sidestep or circling to Rwy 22L at night requires approval from MAJCOM director of Ops or equivalent.

1573



EMERG SAFE ALT 100 NM 3800

ELEV 241

TDZE 22R 240

TDZE 22L 235

223° 4.3 NM from FAF

519 A

396 A

502 ☆

450 A

392 A

340 TW R

10,014 × 150

8014 × 150

4L 4R

HIRL all Rwy

FAF to MAP 3.7 NM

Knots	60	90	120	150	180
Min:Sec	3:42	2:28	1:51	1:29	1:14

HIRL all Rwy

FAF to MAP 3.7 NM

Knots	60	90	120	150	180
Min:Sec	3:42	2:28	1:51	1:29	1:14

SUMTER, SOUTH CAROLINA

Amdt 1 10OCT19

33° 58' N-80° 28' W

SHAW AFB (KSSC)

ILS or LOC Y RWY 22R

SE-2, 31 DEC 2020 to 28 JAN 2021