

SUMTER, SOUTH CAROLINA

TACAN Y RWY 22R

TACAN SSC Chan 38	APCH CRS 222°	22R	22L
		Rwy Ldg	10,014 8014
		TDZE	240 235
		Arprt Elev	241 241

AL-409 [USAF]

SHAW AFB (KSSC)

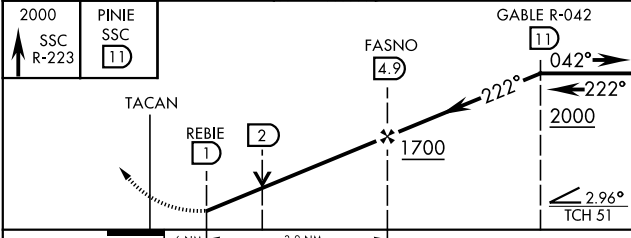
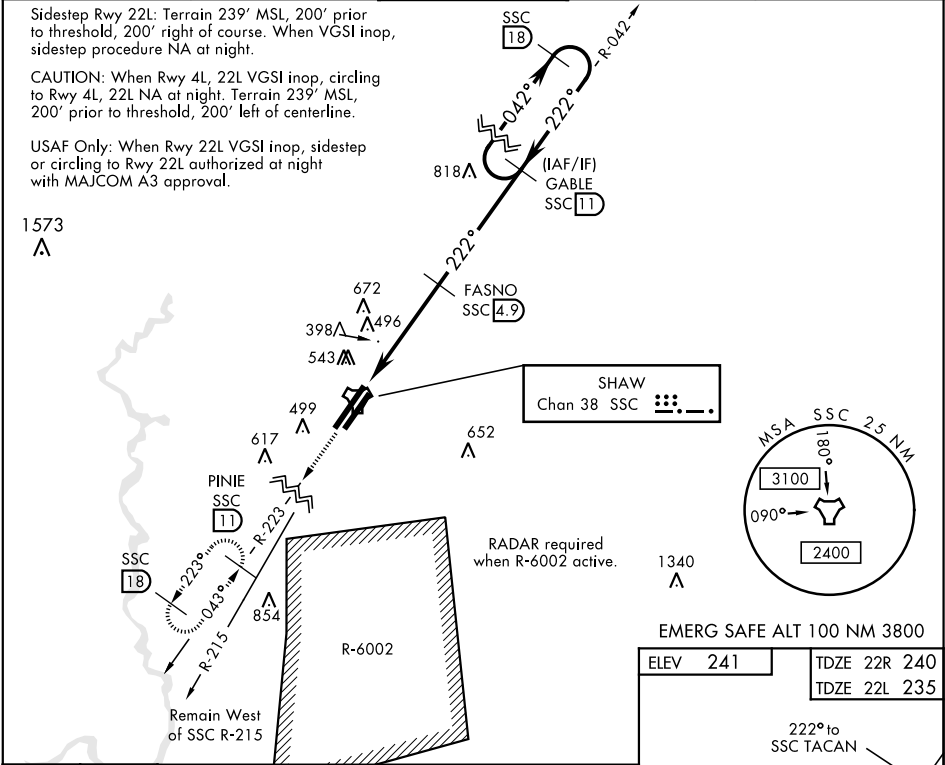
▼ * When ALS inop, increase CAT AB RVR to 55, vis to 1 mile;
CAT CDE vis to 1½ miles.
** When ALS inop, increase CAT AB RVR to 55, vis to 1 mile;
CAT CDE vis to 1¾ miles.

ALSF-1

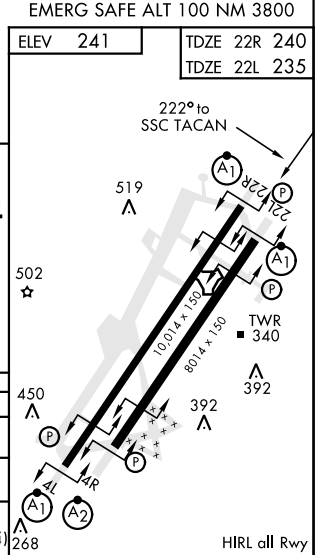
A1

MISSED APPROACH: Climbing to 2000, intercept
SSC TACAN R-223 to PINIE and hold.

ATIS ★ 132.125 270.1	SHAW APP CON 125.4 318.1	SHAW TOWER ★ 126.65 254.25	GND CON 126.1 275.8	CLNC DEL 126.1 275.8
-------------------------	-----------------------------	-------------------------------	------------------------	-------------------------



CATEGORY	A	B	C	D	E
S-22R*	760/24 520 (600-½)		760/55 520 (600-1)		
SIDESTEP ** 22L	760/50 505 (600-1)		760/55 505 (600-1)		
CIRCLING	820-1 579 (600-1)	880-1 639 (700-1)	1000-2¼ 759 (800-2¼)	1000-2½ 759 (800-2½)	1000-2¾ 759 (800-2¾)



SUMTER, SOUTH CAROLINA
Amdt 1 07NOV19

33° 58' N-80° 28' W

SHAW AFB (KSSC)

TACAN Y RWY 22R

SE-2, 31 DEC 2020 to 28 JAN 2021

SE-2, 31 DEC 2020 to 28 JAN 2021