
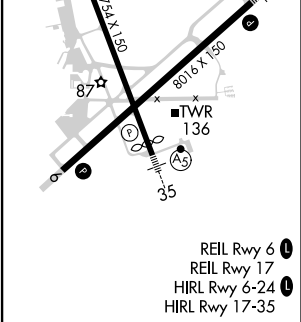
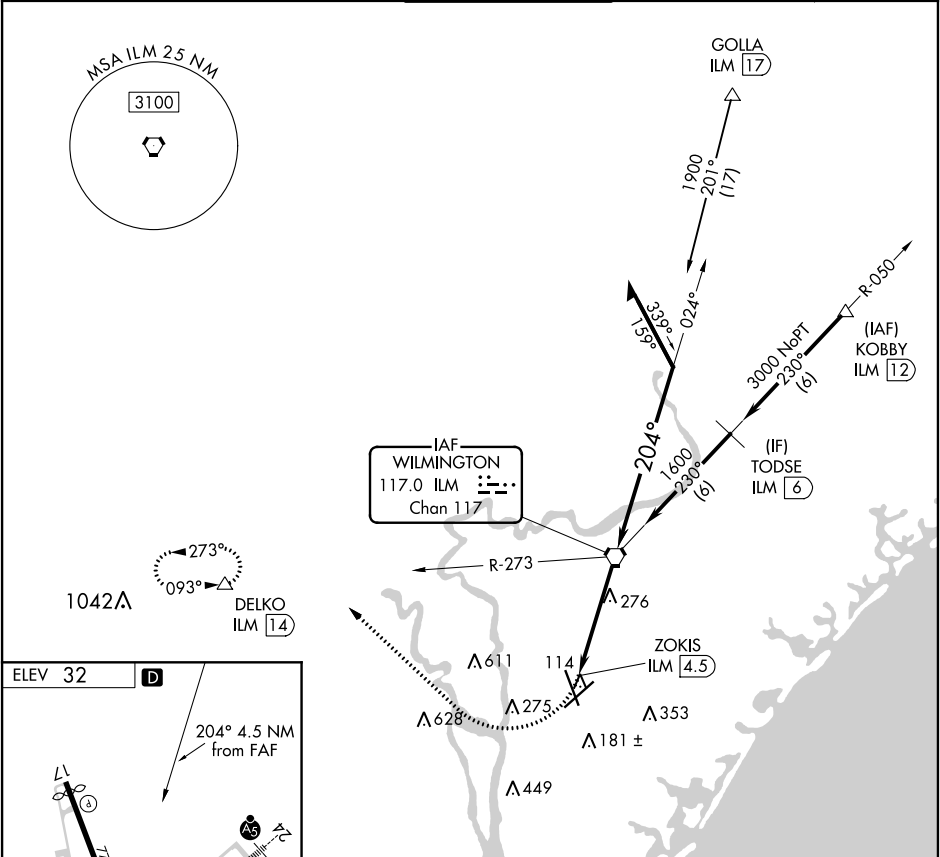


VORTAC ILM	APP CRS	Rwy Idg	N/A
117.0	204°	TDZE	N/A
Chan 117		Apt Elev	32

TACAN-A  
WILMINGTON INTL (ILM)

		MISSED APPROACH: Climbing right turn to 3000 heading 320° and ILM R-273 to DELKO/ILM 14 DME and hold.		
ATIS 124.975	WILMINGTON APP CON ★ 118.25 284.65 (164°-343°) 135.75 317.425 (344°-163°)	WILMINGTON TOWER ★ 119.9(CTAF) 0 239.3	GND CON 121.9 348.6	UNICOM 122.95



<div>3000 hdg 320°</div>		ILM R-273	DELKO △	<div>ILM VORTAC</div> <div>Remain within 10 NM</div> <div>024°</div> <div>1900</div> <div>204°</div> <div>1600</div> <div>4.5 NM</div>		

SE-2, 31 DEC 2020 to 28 JAN 2021

SE-2, 31 DEC 2020 to 28 JAN 2021