

WAAS CH 82011 W33A	APP CRS 332°	Rwy Idg TDZE 941 Apt Elev 969
--	------------------------	---

RNAV (GPS) RWY 33

SMITH REYNOLDS (INT)

⚠

For inoperative MALSR, when using Piedmont Triad Intl altimeter setting, increase LPV all Cats visibility to 1 mile. Baro-VNAV NA when using Piedmont Triad Intl altimeter setting. For uncompensated Baro-VNAV systems, LNAV/VNAV NA below -16°C (4°F) or above 47°C (116°F). DME/DME RNP-0.3 NA. When local altimeter setting not received, use Piedmont Triad Intl altimeter setting and increase all DA 39 feet, and all MDA 40 feet, increase LNAV/VNAV all Cats and Circling Cat D visibility ¼ mile. Circling Rwy 4, 22 NA at night. **RVR 1800 authorized with use of FD or AP or HUD to DA, NA when using Piedmont Triad Intl altimeter setting.

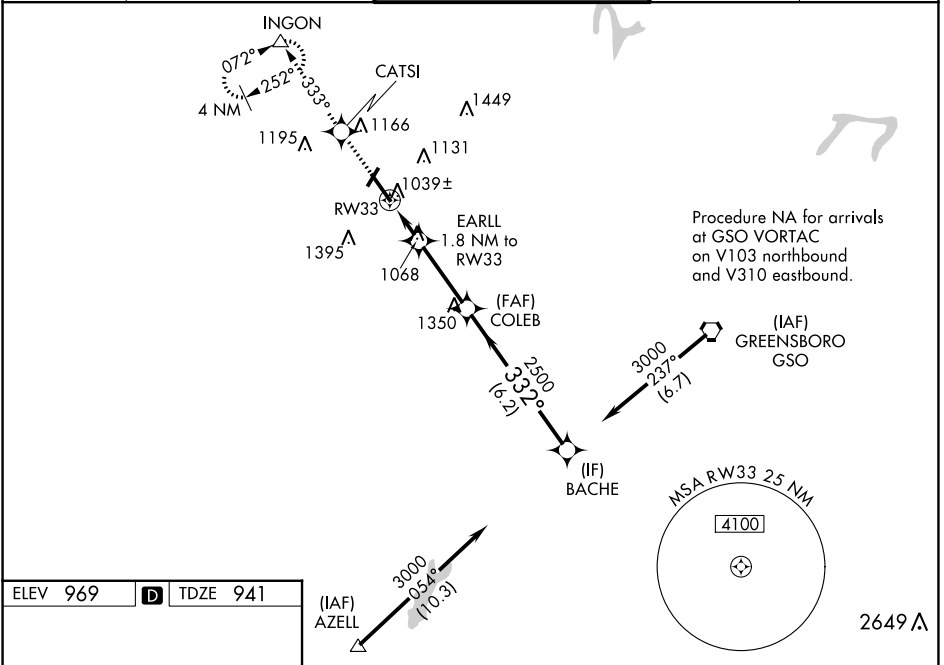
MALSR

⚠

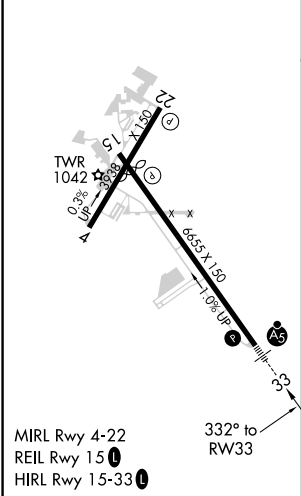
⚠

MISSED APPROACH:
Climb to 3500 direct CATSI and on 333° track to INCON and hold, continue climb-in-hold to 3500.

ATIS 121.3	GREENSBORO APP CON 124.35 269.225	WINSTON-SALEM TOWER ★ 123.75 (CTAF) 0 257.8	GND CON 128.25	UNICOM 122.95
----------------------	---	---	--------------------------	-------------------------



ELEV 969	D	TDZE 941
----------	---	----------



3500	CATSI	tr 333°	INGON	BACHE
	⬆	✦	△	
*LNAV only.				
	RW33	EARLL 1.8 NM to RW33	COLEB	3000
		*1520		332°
		2500		Procedure Turn NA
				GP 3.00°
				TCH 57
	1.8 NM	3 NM	6.2 NM	
CATEGORY	A	B	C	D
LPV DA**	1141/24 200 (200-½)			
LNAV/VNAV DA	1407/60 466 (500-1¼)			
LNAV MDA	1380/24	439 (500-½)	1380/40	1380/50
			439 (500-¾)	439 (500-1)
CIRCLING	1480-1	1580-1	1580-1¼	1740-2½
	511 (600-1)	611 (700-1)	611 (700-1¼)	771 (800-2½)