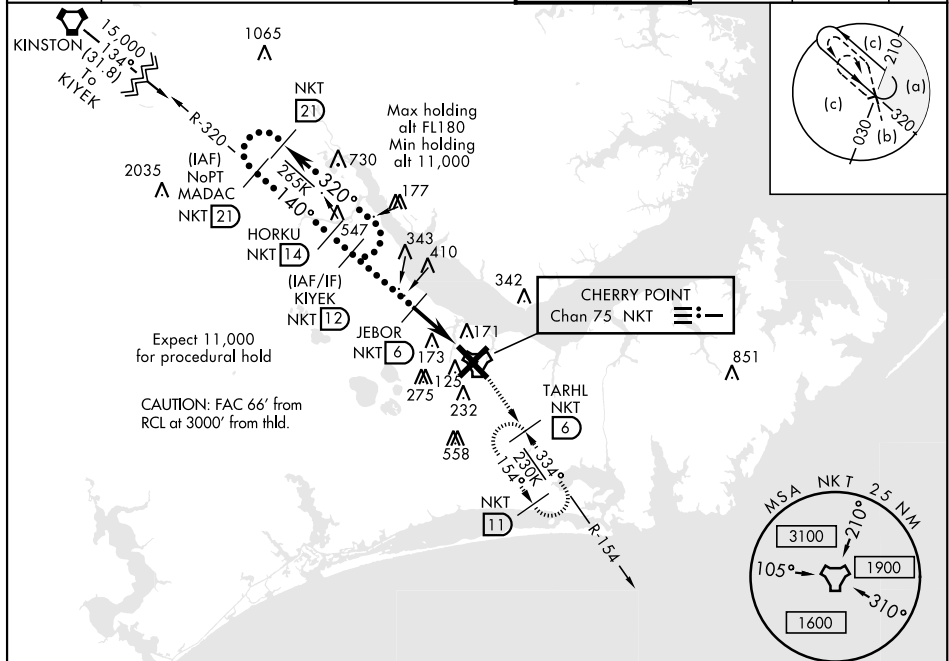


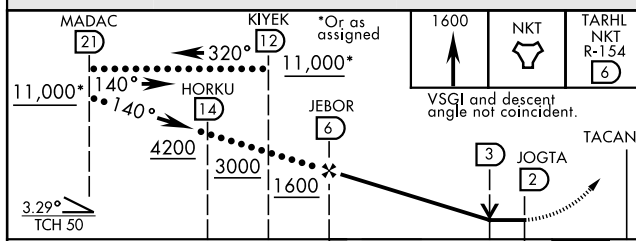
TACAN Chan <b>75</b>	APCH CRS <b>140°</b>	Rwy Idg TDZE <b>26</b> Arpt Elev <b>29</b>	JAL-471 [USN] CHERRY POINT MCAS (CUNNINGHAM FLD) (KNKT)
-------------------------	-------------------------	--	---

# HI-TACAN Z RWY 14L

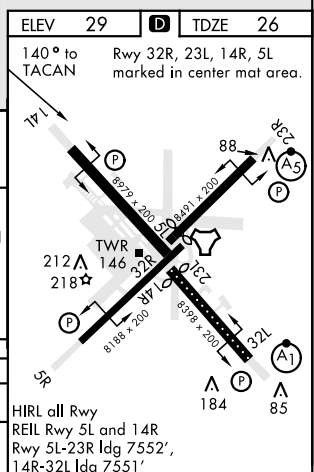
<div>▼</div>				MISSED APPROACH: Climb to 1600 to NKT TACAN then intercept NKT R-154 to TARHL and hold.				
ATIS	CHERRY POINT APP CON			CHERRY POINT TOWER	GND CON	CLNC DEL	ASR/ PAR	
127.475	119.75	360.775	(E) (abv 2600')			128.625	125.95	
244.875	132.575	299.6	(E) (at/blw 2600')					
	119.35	377.175	(W) 124.1 268.7 (N)	121.3 340.2	239.025	316.125		



EMERG SAFE ALT 100 NM 4100



CATEGORY	C	D	E
S-14L	500-1 $\frac{3}{8}$	474	(500-1 $\frac{3}{8}$ )
CIRCLING	600-1 $\frac{1}{2}$ 571 (600-1 $\frac{1}{2}$ )	600-2 571 (600-2)	700-2 $\frac{1}{2}$ 671 (700-2 $\frac{1}{2}$ )



# HI-TACAN Z RWY 14L