
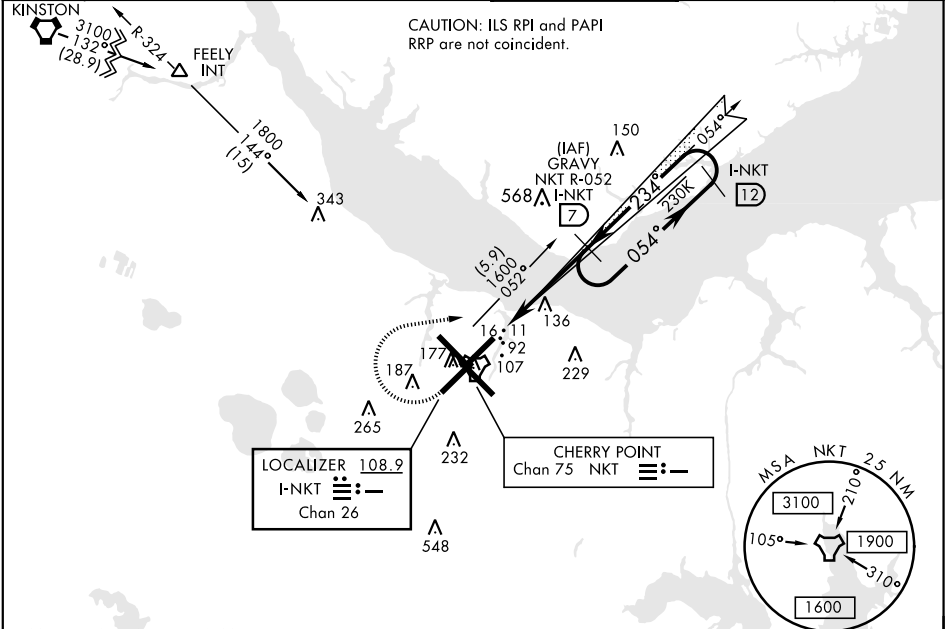


CHERRY POINT, NORTH CAROLINA

ILS or LOC/DME RWY 23R

LOC/DME I-NKT <b>108.9</b> Chan <b>26</b>		APCH CRS <b>234°</b>	Rwy Idg <b>7552</b> TDZE <b>23</b> Arpt Elev <b>29</b>	AL-471 [USN]	CHERRY POINT MCAS (CUNNINGHAM FLD) (KNKT)		
TACAN Required ▼ * When ALS inop, increase vis to ¾ mile. ** When ALS inop, increase vis to 1 mile.				MALSR 	MISSED APPROACH: Climb to 500, then climbing right turn to 2600 via NKT TACAN R-052 to GRAYV and hold. Continue climb in hold.		
ATIS <b>127.475</b> <b>244.875</b>	CHERRY POINT APP CON (E) <b>119.75 360.775</b> (abv 2600') (E) <b>132.575 299.6</b> (at/blw 2600') (W) <b>119.35 377.175 (N) 124.1 268.7</b>			CHERRY POINT TOWER <b>121.3 340.2</b>	GND CON <b>128.625</b> <b>239.025</b>	CLNC DEL <b>125.95</b> <b>316.125</b>	ASR/ PAR



EMERG SAFE ALT 100 NM 4100

500 ↑	2600 NKT R-052	GRAYV NKT 7			
<div style="display: flex; justify-content: space-around; align-items: center;"> <div style="text-align: center;">I-NKT DME</div> <div style="text-align: center;">PEPAE I-NKT 2.7</div> <div style="text-align: center;">I-NKT 3.3</div> <div style="text-align: center;">GRAYV NKT R-052 I-NKT 7 1585</div> </div>					
<div style="display: flex; justify-content: space-around; align-items: center;"> <div style="text-align: center;">0.5</div> <div style="text-align: center;">4.3 NM</div> </div>					
CATEGORY	A	B	C	D	
S-ILS 23R*	223-½		200	(200-½)	
S-LOC 23R**	400-½	377 (400-½)	400-5/8		377 (400-5/8)
CIRCLING	580-1	551 (600-1)	600-1½ 571 (600-1½)	600-2 571 (600-2)	

ELEV 29	D	TDZE 23			
Rwy 32R, 23L, 14R, 5L 234° 4.8 NM marked in center mat area. from FAF					

CHERRY POINT, NORTH CAROLINA 34° 54' N-76° 53' W CHERRY POINT MCAS (CUNNINGHAM FLD) (KNKT)

Amtd 4 10SEP20

ILS or LOC/DME RWY 23R

SE-2, 31 DEC 2020 to 28 JAN 2021

SE-2, 31 DEC 2020 to 28 JAN 2021