


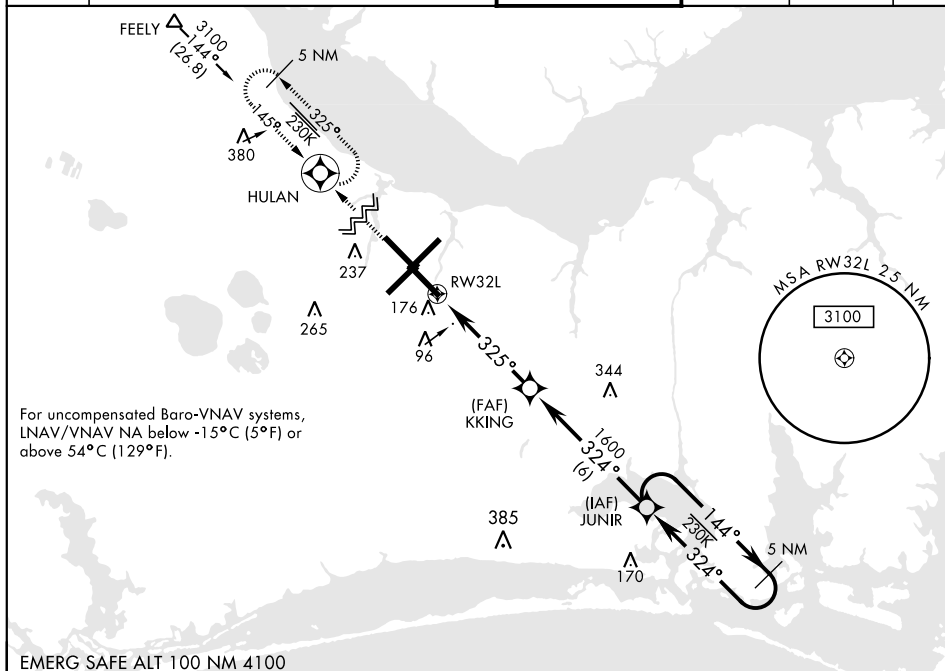
RNAV (GPS) RWY 32L

AL-471 [USN] CHERRY POINT MCAS (CUNNINGHAM FLD) (KNKT)

WAAS Chan 54304 W32A	APCH CRS 325°	Rwy Idg 7551 TDZE 26 Arpt Elev 29
--	-------------------------	--

<p>RNP APCH</p> <p>V *When ALS inop, increase vis to $\frac{3}{4}$ mile. **When ALS inop, increase vis to 1$\frac{1}{2}$ mile. ***When ALS inop, increase CAT AB vis to 1 mile, CAT CD vis to 1$\frac{3}{4}$ miles.</p>	<p>ALSF-1</p> 	<p>MISSED APPROACH: Climb to 3100 direct HULAN and hold</p>
--	---	---

ATIS	CHERRY POINT APP CON				CHERRY POINT TOWER		GND CON	CLNC DEL	ASR/ PAR
127.475	(E)	119.75	360.775	(abv 2600')			128.625	125.95	
	(E)	132.575	299.6	(at/blw 2600')					
244.875	(W)	119.35	377.175	(N) 124.1 268.7	121.3	340.2	239.025	316.125	



3100 **HULAN**

VGSI and RNAV glidepath no coincident.
↑ LNAV only

ELEV 29 **D** **TDZE 26**

Rwy 32R, 23L, 14R, 5L marked in center mat area.

CATEGORY	A	B	C	D
LPV DA*	226-½	200	(200-½)	
LNAV/ **	415-⅝	389	(400-⅝)	
VNAV DA				
LNAV MDA***	480-½	454 (500-½)	480-⅞	454 (500-⅞)

C CIRCLING

580-1	551 (600-1)	600-1½	571 (600-1½)	600-2	571 (600-2)
-------	-------------	--------	--------------	-------	-------------

HIRL all Rwy
REIL Rwy 5L and 14R
Rwy 5L-23R 7552', 14R-32L Idg 7551'

CHERRY POINT, NORTH CAROLINA

34°54'N-76°53'W

CHERRY POINT MCAS (CUNNINGHAM FLD) (KNKT)

RNAV (GPS) RWY 32L