

RNAV (GPS) RWY 5R

WAAS	APCH CRS	Rwy Idg	8188
Chan <b>71199</b>	<b>054°</b>	TDZE	<b>27</b>
<b>W05A</b>		Arprt Elev	<b>29</b>

AL-471 [USN]

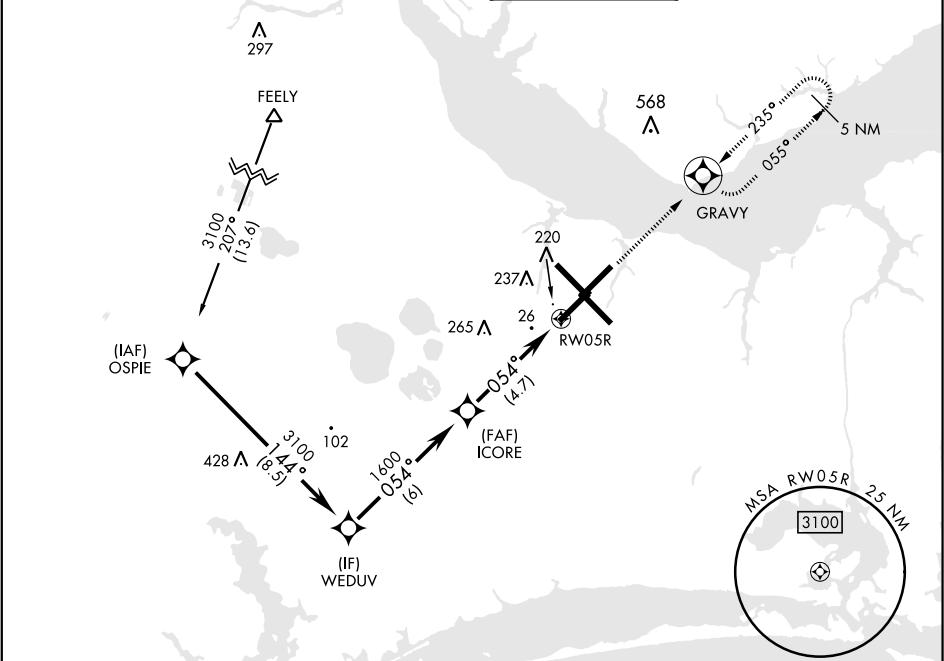
CHERRY POINT MCAS (CUNNINGHAM FLD) (KNKT)

RNP APCH

For uncompensated Baro-VNAV systems, LNAV/VNAV NA below -15°C (5°F) or above 54°C (129°F).

MISSED APPROACH: Climb to 3100 direct GRAVY and hold. Continue climb in hold to 3100.

ATIS	CHERRY POINT APP CON				CHERRY POINT TOWER	GND CON	CLNC DEL	ASR/PAR
<b>127.475</b>	(E) <b>119.75</b>	<b>360.775</b>	(abv 2600')		<b>121.3 340.2</b>	<b>128.625</b>	<b>125.95</b>	
<b>244.875</b>	(E) <b>132.575</b>	<b>299.6</b>	(at/blw 2600')			<b>239.025</b>	<b>316.125</b>	
	(W) <b>119.35</b>	<b>377.175</b>	(N) <b>124.1</b>	<b>268.7</b>				



EMERG SAFE ALT 100 NM 4100

VGSI and RNAV glidepath not coincident.

ELEV 29 TDZE 27

Rwy 32R, 23L, 14R, 5L marked in center mat area.

CATEGORY	A	B	C	D
LPV DA	227-¾	200	(200-¾)	
LNAV/VNAV DA	398-1	371	(400-1)	
LNAV MDA	500-1 473 (500-1)	500-1¾ 473 (500-1¾)		
CIRCLING	580-1 551 (600-1)	600-1½ 571 (600-1½)	600-2 571 (600-2)	

RNAV (GPS) RWY 5R

SE-2, 31 DEC 2020 to 28 JAN 2021

SE-2, 31 DEC 2020 to 28 JAN 2021