

LOC/DME I-LEI
108.5
Chan **22**

APP CRS
234°

Rwy Idg **7500**
TDZE **435**
Apt Elev **435**

ILS or LOC RWY 23L
RALEIGH-DURHAM INTL (RDU)

RADAR required for procedure entry. DME required for LOC only.

Simultaneous approach authorized. For inop ALS, increase S-ILS 23L all Cts visibility to RVR 5500. For inop ALS, increase S-LOC-23L Cat C/D visibility to 2½ SM. Localizer unusable for coupled approaches below 1100 or within 2 NM of threshold.

MALSR

MISSED APPROACH: Climb to 1100 then climbing left turn to 2600 on heading 050° and RDU VORTAC R-092 to ZEBUL INT and hold.

D-ATIS
123.8

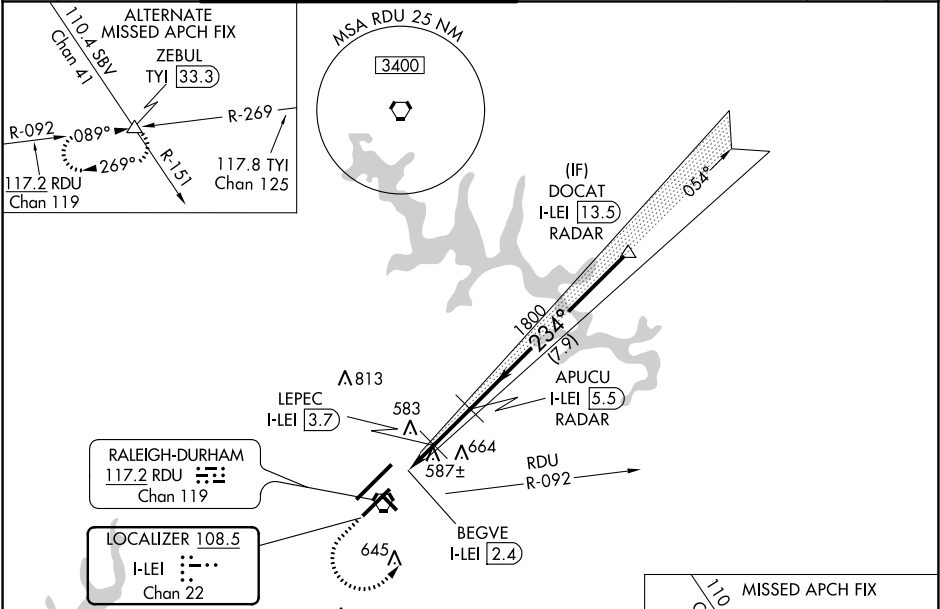
RALEIGH APP CON
127.675 307.9

(EAST) RALEIGH TOWER (WEST)
127.45 257.8 **119.3 257.8**

(EAST) GND CON (WEST)
121.9 348.6 **121.7 348.6**

CLNC DEL
120.1

CPDLC



ELEV **435** **D** TDZE **435**

REIL Rwy 32
MIRL Rwy 14-32
HIRL Rwys 5R-23L and 5L-23R
TDZ/CL Rwys 23R, 23L and 5L

MISSED APCH FIX
Chan 41
R-092 heading 092° and 272°
R-269 heading 117.8°
ZEBUL RDU 19.6
R-151 heading 117.2°
RDU Chan 119

1100 2600
RDU R-092
hdg 050°

*LOC only.

ZEBUL
△

APUCU I-LEI 5.5 RADAR
Localizer unusable from 1 NM from threshold.

DOCAT I-LEI 13.5 RADAR

LEPEC I-LEI 3.7
BEGVE I-LEI 2.4

1800 234° 4000
*1200 1800
GS 3.00° TCH 56

1 NM 1.3 NM 1.8 NM 7.9 NM

CATEGORY	A	B	C	D
S-ILS 23L	806/35	371 (400-½)		
S-LOC 23L	840/40	405 (500-¾)		
C CIRCLING	960-1¼	525 (600-1¼)	1040-1¾ 605 (700-1¾)	1180-2½ 745 (800-2½)