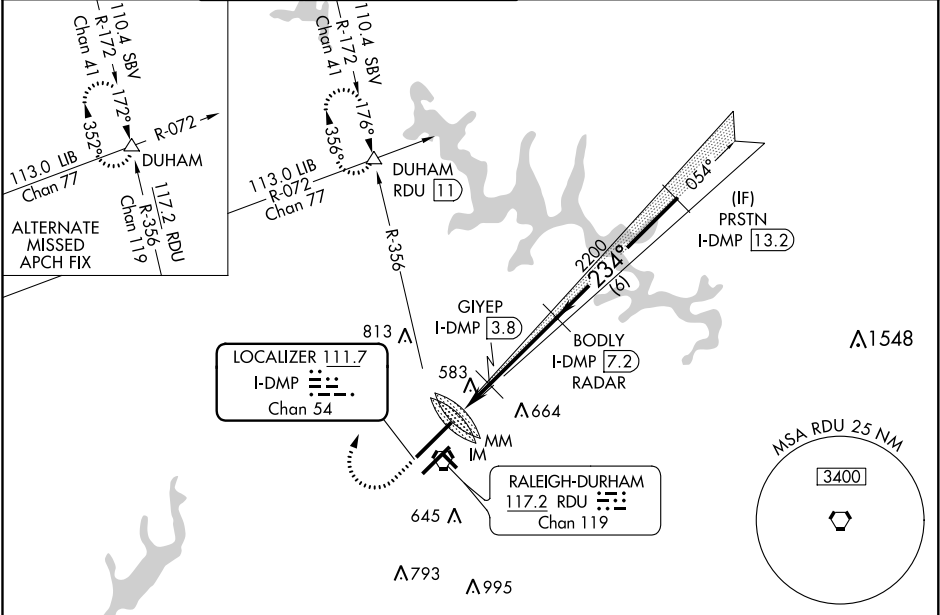
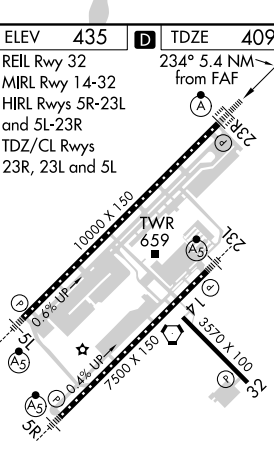


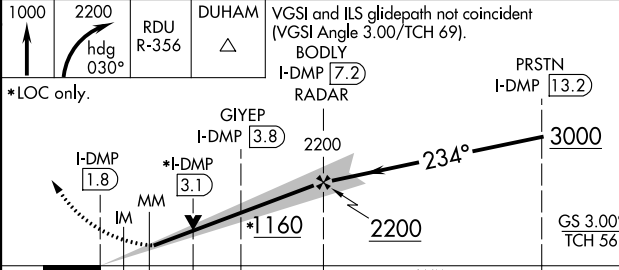
LOC/DME I-DMP 111.7 Chan 54	APP CRS 234°	Rwy Idg TDZE Apt Elev 10000 409 435	ILS or LOC RWY 23R RALEIGH-DURHAM INTL (RDU)	
---	------------------------	---	--	--

RADAR required for procedure entry, DME or RADAR required.		ALSf-2	MISSED APPROACH: Climb to 1000 then climbing right turn to 2200 on heading 030° and on RDU VORTAC R-356 to DUHAM INT/RDU 11 DME and hold.	
Simultaneous approach authorized.				

D-ATIS	RALEIGH APP CON	(EAST) RALEIGH TOWER	(WEST)	(EAST) GND CON	(WEST)	CLNC DEL	CPDLC
123.8	127.675 307.9	127.45 257.8 Rwys 5R-23L and 1-4-32	119.3 257.8 Rwy 5L-23R	121.9 348.6 Rwys 5R-23L and 1-4-32	121.7 348.6 Rwy 5L-23R	120.1	



ELEV 435	TDZE 409	RDU R-356		VGSI and ILS glidepath not coincident (VGSI Angle 3.00/TCH 69).	
REIL Rwy 32		234° 5.4 NM from FAF		BODLY I-DMP 7.2	
MIRL Rwy 14-32				PRSTN I-DMP 13.2	
HIRL Rwy 5R-23L and 5L-23R					
TDZ/CL Rwy 23R, 23L and 5L					
					
FAF to MAP 5.4 NM					
Knots	60	90	120	150	180
Min:Sec	5:24	3:36	2:42	2:10	1:48

1000	2200	DUHAM	VGSI and ILS glidepath not coincident (VGSI Angle 3.00/TCH 69).	
↑	hdg 030°	R-356	△	BODLY I-DMP 7.2
*LOC only.				
				
CATEGORY		B C D		
S-ILS 23R		609/18 200 (200-½)		
S-LOC 23R		1160/24 751 (800-½)	1160/40 751 (800-¾)	1160-1¾ 751 (800-1¾)
CIRCLING		1160-1 725 (800-1)	1160-1¼ 725 (800-1¼)	1160-2¼ 725 (800-2¼)
GIYEP FIX MINIMUMS				
S-LOC 23R		900/24 491 (500-½)	900/40 491 (500-¾)	900/50 491 (500-1)
CIRCLING		960-1 525 (600-1)	1040-1¾ 605 (700-1¾)	1180-2½ 745 (800-2½)