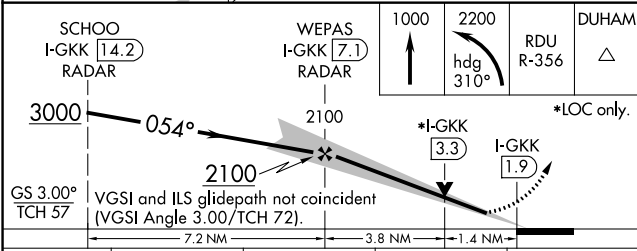
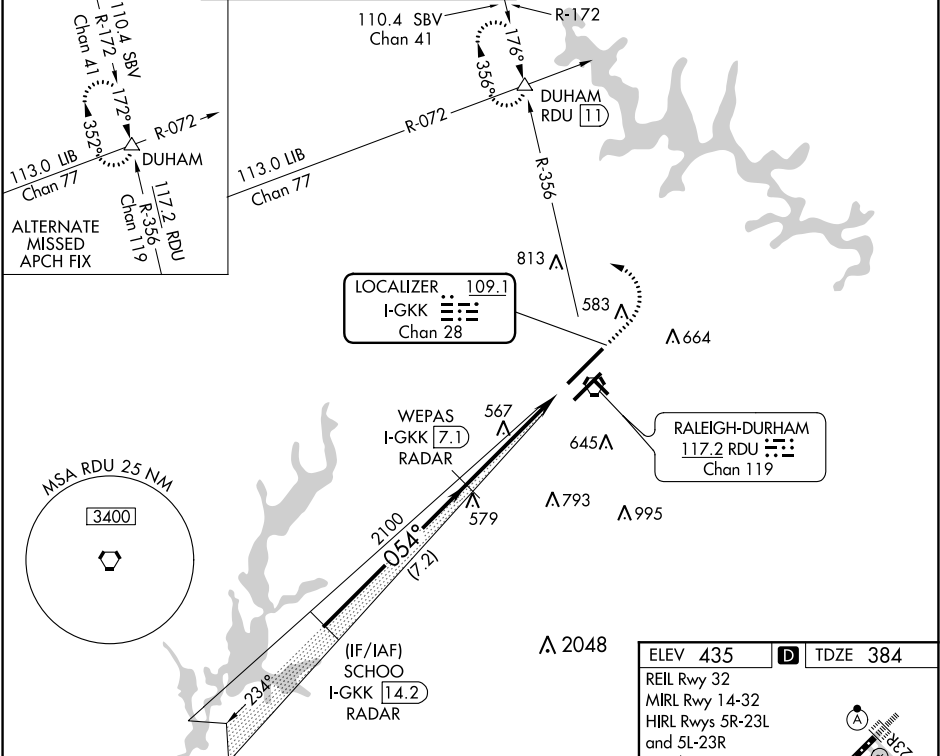


LOC/DME I-GKK 109.1 Chan 28	APP CRS 054°	Rwy Idg TDZE Apt Elev 10000 384 435	ILS or LOC RWY 5L RALEIGH-DURHAM INTL (RDU)	
---	------------------------	---	--	--

RADAR required for procedure entry, DME required.		MALSR	MISSED APPROACH: Climb to 1000 then climbing left turn to 2200 on heading 310° and RDU VORTAC R-356 to DUHAM INT/RDU 11 DME and hold.
Simultaneous approach authorized.			

D-ATIS	RALEIGH APP CON	(EAST) RALEIGH TOWER	(WEST)	(EAST) GND CON	(WEST)	CLNC DEL	CPDLC
123.8	127.675 307.9	127.45 257.8 Rwys 5R-23L and 14-32	119.3 257.8 Rwy 5L-23R	121.9 348.6 Rwys 5R-23L and 14-32	121.7 348.6 Rwy 5L-23R	120.1	



CATEGORY	A	B	C	D
S-ILS 5L	595/18 211 (200-½)			
S-LOC 5L	880/24 496 (500-½)	880/40 496 (500-¾)	880/50 496 (500-1)	
CIRCLING	960-1 525 (600-1)	1040-1¾ 605 (700-1¾)	1180-2½ 745 (800-2½)	

