

ILS or LOC RWY 5R
RALEIGH-DURHAM INTL (RDU)

MISSED APPROACH: Climb to 1000 then climbing right turn to 2600 on heading 130° and on RDU VORTAC R-092 to ZEBUL INT/RDU 19.6 DME and hold.



ALTERNATE MISSED APCH FIX

110.4 SBY
Chan 41

117.8 TYI
Chan 125

ZEBUL
TYI [33.3]

R-269 089°

269° R-151

MSA RDU 25 NM
[3400]

234°

2400
054°
[6]

PURME
I-RDU [7.5]
RADAR

(IF/IAF)
PECIT
I-RDU [13.5]
RADAR

AMORT
I-RDU [2.8]

451±

645

LOCALIZER 109.5
I-RDU [32]
Chan 32

Δ 813

583

Δ 664

R-092

Δ 793

Δ 995

RALEIGH-DURHAM
117.2 RDU [119]
Chan 119

110.4 SBY
Chan 41

117.2 RDU
Chan 119

092°

272°

R-092

ZEBUL
RDU [19.6]

R-151

Δ 2048

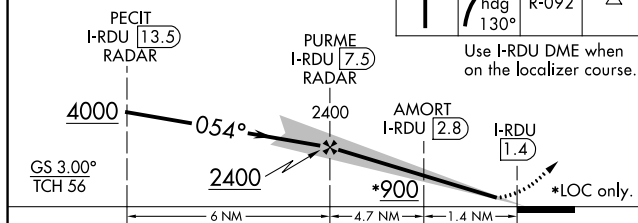
ELEV 435

D

TDZE 420

1000 ↑	2600 ↗ hdg 130°	RDU R-092	ZEBUL △
-----------	--------------------------	--------------	------------

Use I-RDU DME when
on the localizer course.



CATEGORY	A	B	C	D
S-ILS 5R #	620/24 200 (200-½)			
S-LOC 5R	760/24 340 (400-½)		760/26 340 (400-½)	
C CIRCLING	960-1 525 (600-1)		1020-1½ 585 (600-1½)	1180-2½ 745 (800-2½)

