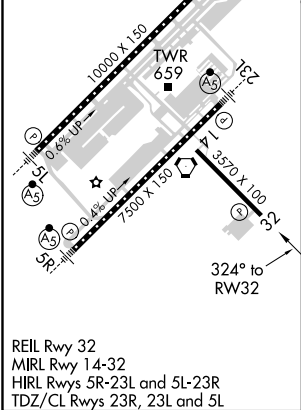
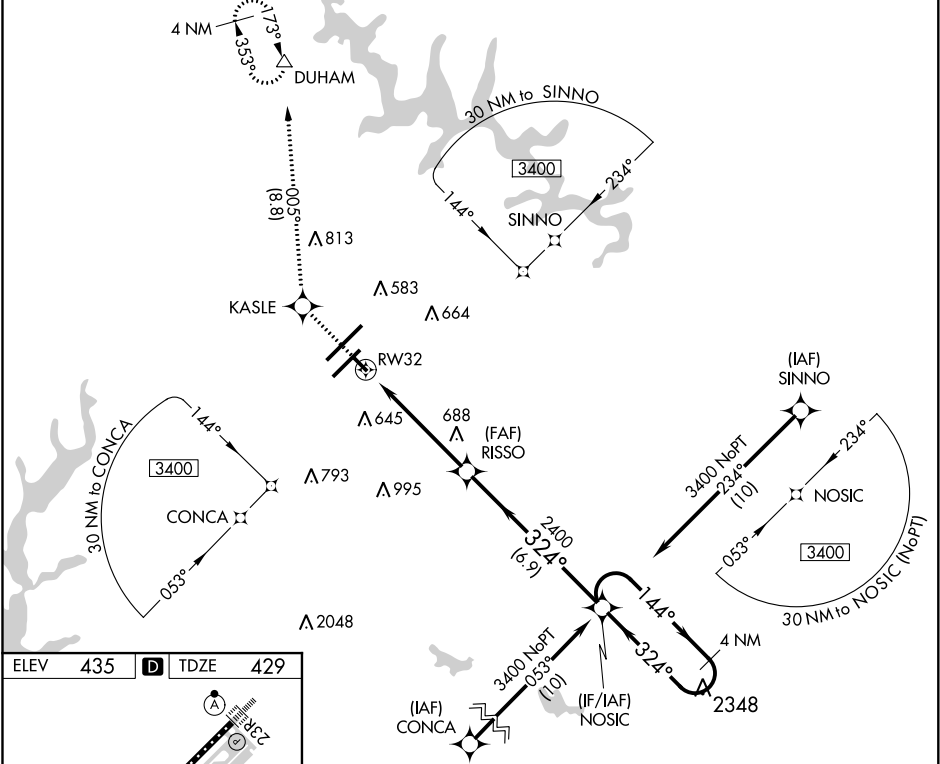


APP CRS	Rwy Idg	3570
324°	TDZE	429
	Apt Elev	435

RNAV (GPS) RWY 32

RALEIGH-DURHAM INTL (RDU)

RNP APCH:				MISSED APPROACH: Climb to 2200 direct KASLE and on track 005° to DUHAM and hold.			
▼ Rwy 32 helicopter visibility reduction below ¾ SM NA. Baro-VNAV NA below -15°C (5°F) or above 48°C (118°F).							
D-ATIS	RALEIGH APP CON	(EAST) RALEIGH TOWER	(WEST)	(EAST) GND CON	(WEST)	CLNC DEL	CPDLC
123.8	127.675 307.9	127.45 257.8	119.3 257.8	121.9 348.6	121.7 348.6	120.1	
		Rwys 5R-23L and 14-32	Rwy 5L-23R	Rwys 5R-23L and 14-32	Rwy 5L-23R		



2200	KASLE	tr 005°	DUHAM	
*LNAV only:				
RW32				
1.3 NM 3.8 NM 6.9 NM				
CATEGORY	A	B	C	D
LNAV/VNAV DA	820-1¼ 391 (400-1¼)			NA
LNAV MDA	1000-1	571 (600-1)	1000-1½ 571 (600-1½)	NA
CIRCLING	1000-1¼	565 (600-1¼)	1040-1¾ 605 (700-1¾)	NA