

APP CRS	Rwy Idg	10000
234°	TDZE	409
	Apt Elev	435

RNAV (RNP) Z RWY 23R

RALEIGH-DURHAM INTL (RDU)

RNP AR APCH, RF required.

▼ For uncompensated Baro-VNAV systems, procedure NA below -9°C (16°F) or above 54°C (130°F). Use of FD or AP providing RNAV track guidance required during simultaneous operations. Simultaneous approach authorized with ILS or LOC Rwy 23L, RNAV (GPS) Y Rwy 23L, except for arrivals at GLEYS and BUTTS. For inop ALS, increase RNP 0.15 all Cats visibility to 1¼, increase RNP 0.30 all Cats visibility to 1½.

ALSF-2



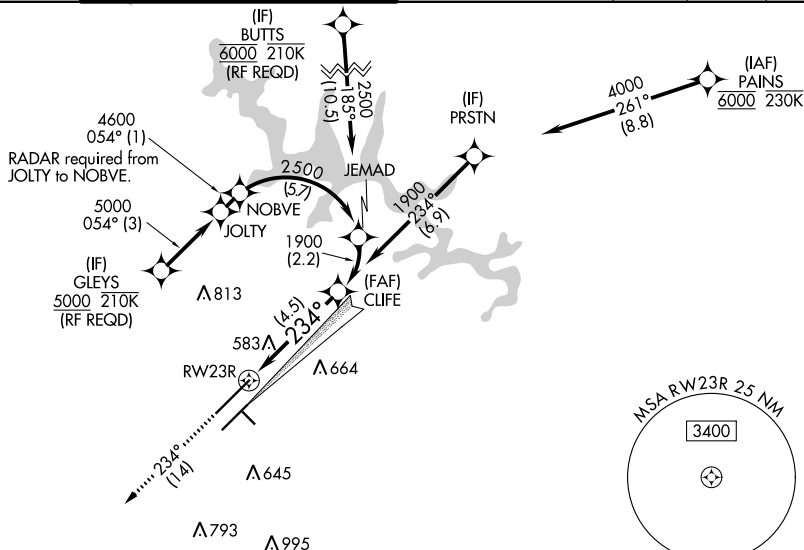
MISSED APPROACH:
Climb to 3000 on
track 234° to
SCHOO and hold.

D-ATIS	RALEIGH APP CON
123.8	127.675 307.9

(EAST) RALEIGH TOWER		(WEST)	
127.45	257.8	119.3	257.8
wys 5B-23I and 14-32		Rwy 5I-23R	


(EAST)	GND CON	(WEST)
121.9	348.6	121.7
348.6		348.6

CLNC DEL 120.1	CPDLC
--------------------------	-------



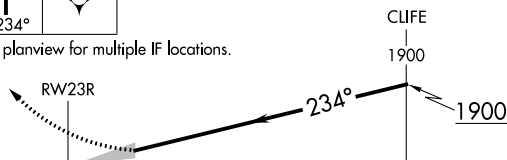
SCHOO



3000 ↑ tr 234°	SCHOO 
----------------------	--

VGSI and RNAV glidepath not coincident (VGSI Angle 3.00/TCH 69).

See planview for multiple IF locations.



CATEGORY	A	B	C	D
RNP 0.15 DA		779/40	370 (400-3/4)	
RNP 0.30 DA		978-1 1/2	569 (600-1 1/2)	

AUTHORIZATION REQUIRED

ELEV 435 **D** TDZE 409

234° to RW23R

10000 X 150

TWR 659

23L

0.8% UP

0.4% UP

7500 X 150

3570 X 100

23R

REIL Rwy 32
MIRL Rwy 14-32
HIRL Rwys 5R-23L and 5L-23R
TDZ/CL Rwys 5L, 23L, and 23R