

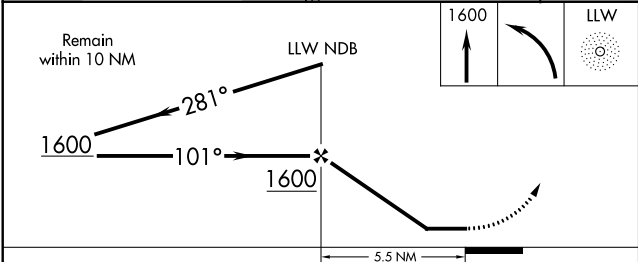
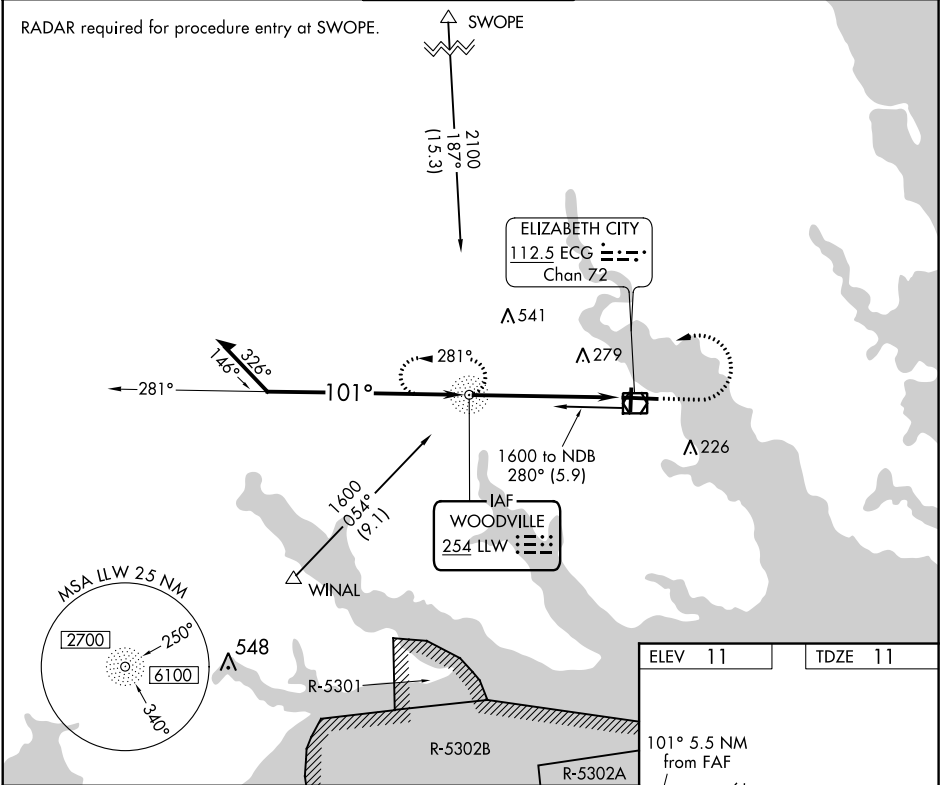
| | | |
|---------|---------|----------|
| NDB LLW | APP CRS | Rwy Idg |
| 254 | 101° | 7219 |
| | | TDZE |
| | | 11 |
| | | Apt Elev |
| | | 11 |


NDB RWY 10

ELIZABETH CITY COAST GUARD AIR STATION/RGNL (E/C/G)

| | | |
|---|---|--|
|   NA | Procedure not authorized when tethered balloon located approximately 2 miles southeast of airport is flying. When local altimeter setting not received, use Currituck altimeter setting and increase all MDA 40 feet. | MISSED APPROACH: Climb to 1600 then left turn direct LLW NDB and hold. |
|---|---|--|

| | | | | |
|---------|-----------------|-----------------------|---------|--------|
| ASOS | NORFOLK APP CON | ELIZABETH CITY TOWER★ | GND CON | UNICOM |
| 124.375 | 119.55 269.425 | 120.5 (CTAF) 355.6 | 121.9 | 122.95 |



| CATEGORY | A | B | C | D |
|--|-------------------|---|---------------------|-------------------|
| S-10 | 640-1 629 (700-1) | | 640-1¾ 629 (700-1¾) | 640-2 629 (700-2) |
|  CIRCLING | 640-1 629 (700-1) | | 640-1¾ 629 (700-1¾) | 640-2 629 (700-2) |

| | |
|---------|---------|
| ELEV 11 | TDZE 11 |
|---------|---------|

101° 5.5 NM from FAF

61 TWR 90
7219 X 150
101° 5.5 NM from FAF

TDZ/CL Rwy 10
MIRL Rwy 1-19
HIRL Rwy 10-28
REIL Rws 10 and 28

| F knots | 60 | 90 | 120 | 150 | 180 |
|---------|------|------|------|------|------|
| Min:Sec | 5:30 | 3:40 | 2:45 | 2:12 | 1:50 |

NDB RWY 10

SE-2, 31 DEC 2020 to 28 JAN 2021

SE-2, 31 DEC 2020 to 28 JAN 2021