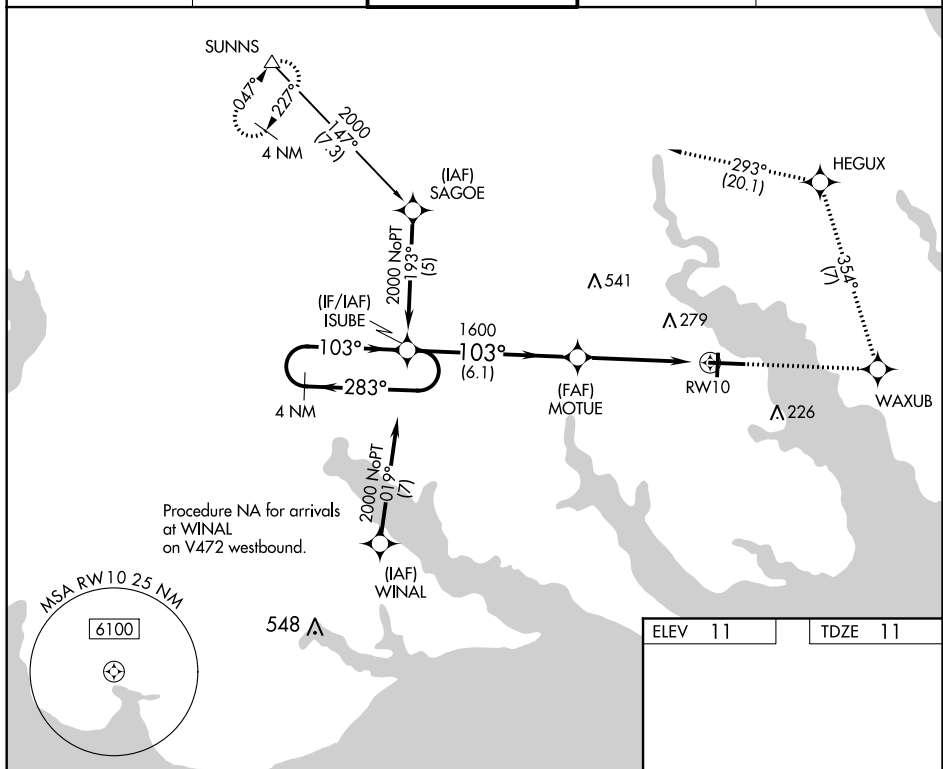


RNAV (GPS) RWY 10
ELIZABETH CITY COAST GUARD AIR STATION/RGRL (ECG)

T Procedure NA when tethered balloon located approximately 2 miles southeast of airport is flying.

MISSED APPROACH: Climb to 2000 direct WAXUB and left turn on track 354° to HEGUX and 2000 on track 293° to SUNNS and hold.

UNICOM
122.95

*LNAV only

M
'10

RW10

1.3 NM

D

9 (500-1 $\frac{3}{8}$)

640-2

ELIZABETH CITY COAST GUARD AIR STATION/RGNL (ECG)

36°16'N-76°10'W

RNAV (GPS) RWY 10

SE-2, 31 DEC 2020 to 28 JAN 2021

SE-2, 31 DEC 2020 to 28 JAN 2021