

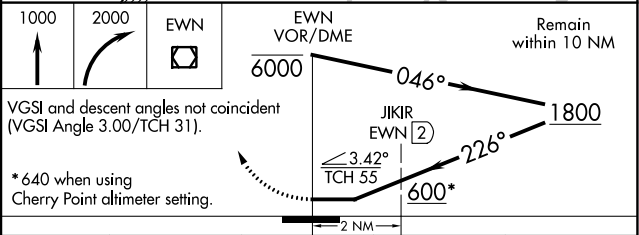
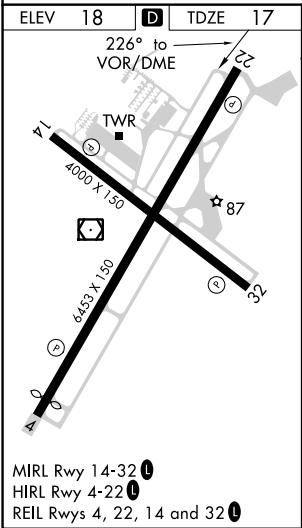
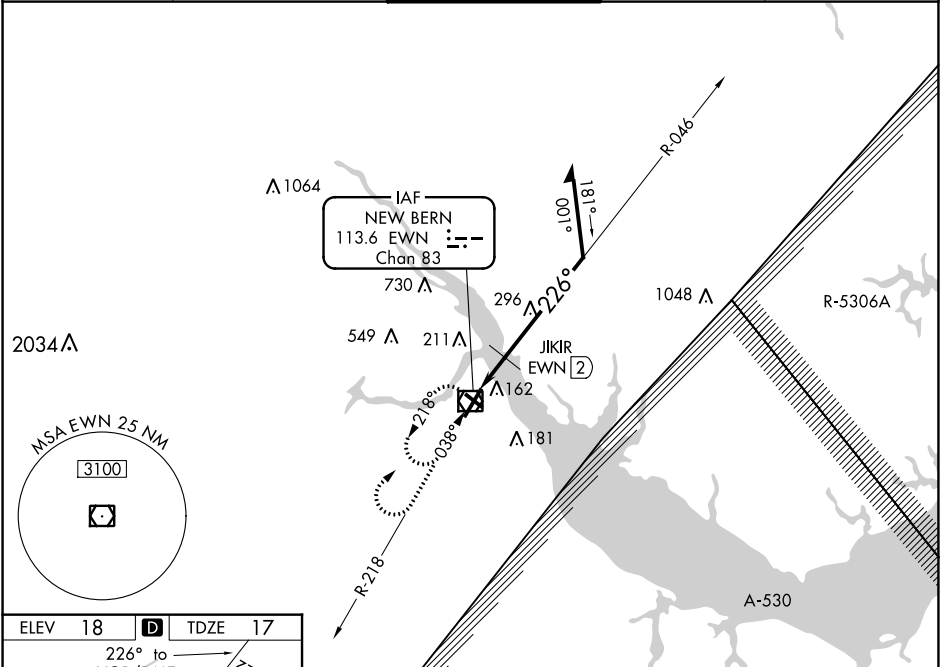
VOR/DME EWN	APP CRS	Rwy Idg	6153
113.6	226°	TDZE	17
Chan 83		Apt Elev	18

VOR RWY 22
COASTAL CAROLINA RGNL (EWN)

⚠ Rwy 14, 32 helicopter visibility reduction below 1 SM NA. Rwy 22 helicopter visibility reduction below 3/4 SM NA. Circling Rwy 14, 32 NA at night. JIKIR fix minimums: S-22 Cat D minimums NA when using Cherry Point altimeter setting. When local altimeter setting not received, use Cherry Point altimeter setting and increase all MDAs 40 feet and Circling Cat D visibility 1/4 SM and JIKIR fix minimums Circling Cat C/D visibility 1/4 SM.

MISSED APPROACH: Climb to 1000 then climbing right turn to 2000 direct EWN VOR/ DME and hold, continue climb-in-hold to 2000.

ASOS	CHERRY POINT APP CON	NEW BERN TOWER ★	CLNC DEL	GND CON
118.525	119.35 374.9	124.25 (CTAF) 0	121.7	121.7



CATEGORY	A	B	C	D
S-22	600-1	583 (600-1)	600-1 3/4	583 (600-1 3/4)
CIRCLING	600-1	582 (600-1)	600-1 3/4 582 (600-1 3/4)	860-2 3/4 842 (900-2 3/4)
JIKIR FIX MINIMUMS (DME REQUIRED)				
S-22	480-1	463 (500-1)	480-1 3/8	463 (500-1 3/8)
CIRCLING	480-1 462 (500-1)	520-1 502 (600-1)	600-1 1/2 582 (600-1 1/2)	860-2 3/4 842 (900-2 3/4)