

LOC/DME I-GR A	APP CRS	Rwy Idg	6508
110.5	038°	TDZE	189
Chan 42		Apt Elev	189

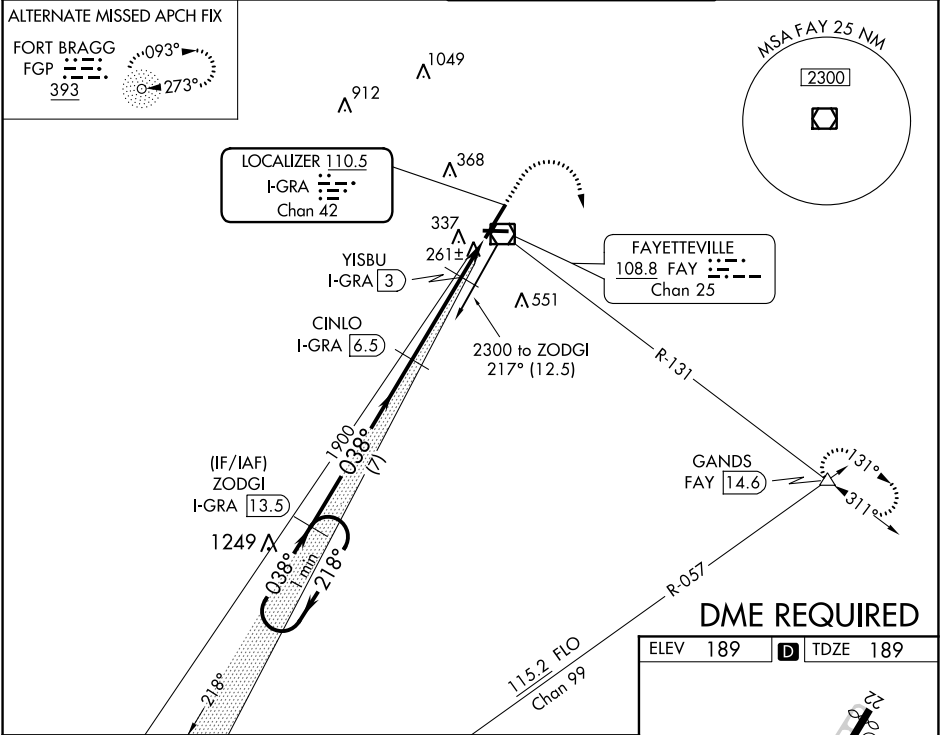
ILS or LOC RWY 4
FAYETTEVILLE RGNL/GRANNIS FIELD (FAY)

⚠ For inop MALS, increase S-LOC 4 Cats C/D visibility to RVR 5000. DME required.
****** RVR 1800 authorized with use of FD or AP or HUD to DA.

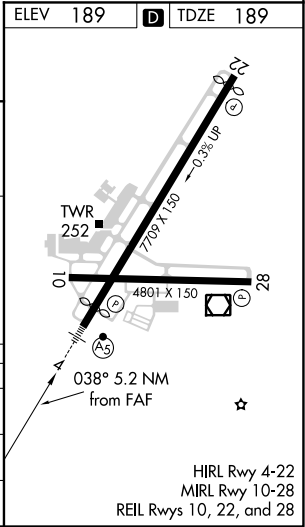
MALS
A5

MISSED APPROACH: Climb to 1100 then climbing right turn to 3000 on FAY VOR/DME R-131 to GANDS INT/FAY 14.6 DME and hold.

ATIS 121.25	FAYETTEVILLE APP CON 133.0 290.25	FAYETTEVILLE TOWER 118.3 269.2	GND CON 121.7 348.6
----------------	--------------------------------------	-----------------------------------	------------------------



VGSI and ILS glidepath not coincident (VGSI Angle 3.13/TCH 47).				
One Minute Holding Pattern ZODGI I-GR A 13.5				
2300 ← 218° → 038° → 038° → 1900				
GS 3.00° TCH 45				
7 NM 3.4 NM 0.9 0.9				
CATEGORY	A	B	C	D
S-ILS 4 **	389/24 200 (200-½)			
S-LOC 4	520/24	331 (400-½)	520/26	331 (400-½)
CIRCLING	640-1	451 (500-1)	860-2 671 (700-2)	860-2¼ 671 (700-2¼)



SE-2, 31 DEC 2020 to 28 JAN 2021

SE-2, 31 DEC 2020 to 28 JAN 2021