

WAAS
CH **45511**
W22A

APP CRS
218°

Rwy Idg
TDZE **180**
Apt Elev **189**

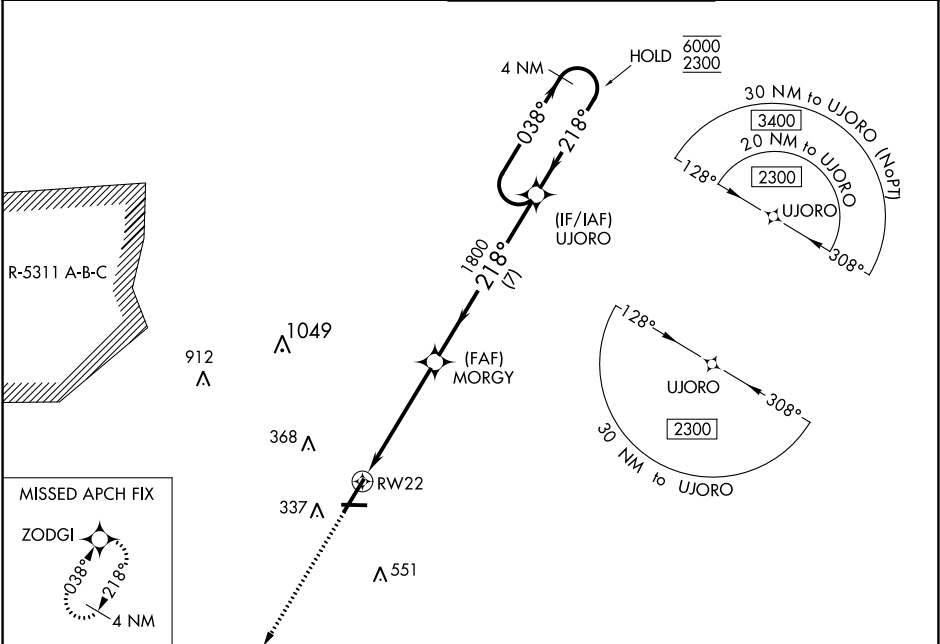
RNAV (GPS) RWY 22

FAYETTEVILLE RGNL/GRANNIS FIELD (FAY)

RNP APCH.
For uncompensated Baro-VNAV systems, LNAV/VNAV NA below -10°C or above 54°C.

MISSED APPROACH: Climb to 2300 direct ZODGI and hold.

ATIS 121.25	FAYETTEVILLE APP CON 133.0 290.25	FAYETTEVILLE TOWER 118.3 269.2	GND CON 121.7 348.6
-----------------------	---	--	-------------------------------



ELEV 189 **D** TDZE 180

HIRL Rwy 4-22
MIRL Rwy 10-28
REIL Rwy 10, 28 and 22

4 NM Holding Pattern

CATEGORY	A	B	C	D
LPV DA		380-3/4	200 (200-3/4)	
LNAV/VNAV DA		437-3/4	257 (300-3/4)	
LNAV MDA		560-1	380 (400-1)	
C CIRCLING	640-1 451 (500-1)	660-1 471 (500-1)	860-2 671 (700-2)	860-2 1/4 671 (700-2 1/4)