
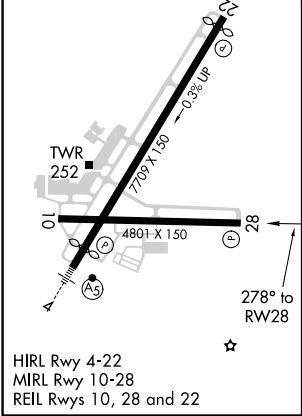
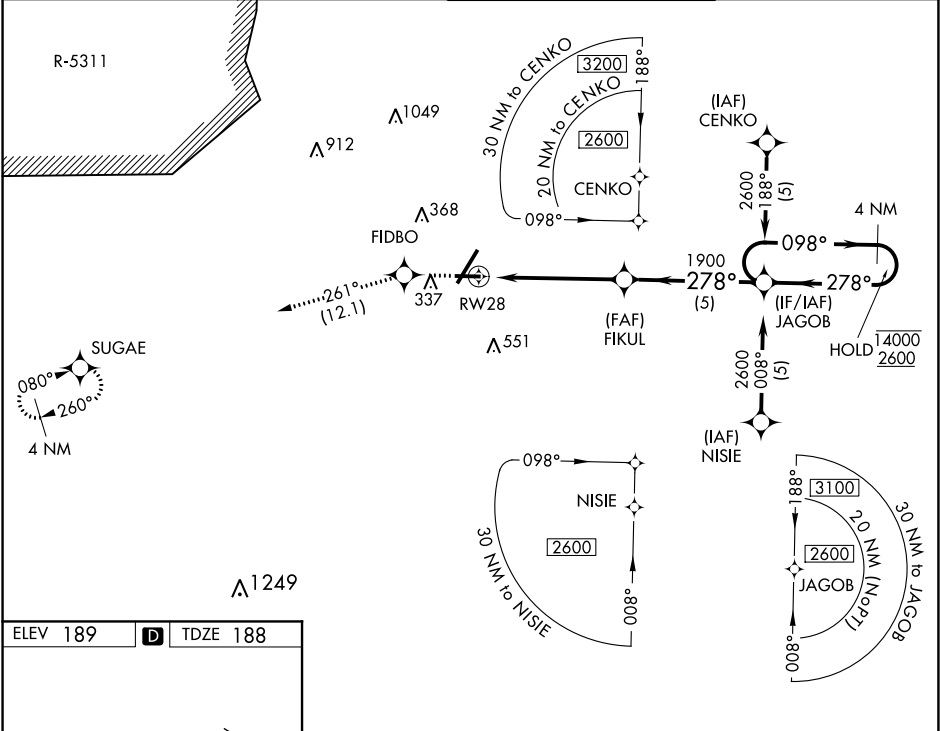



APP CRS	Rwy Idg	4801
278°	TDZE	188
	Apt Elev	189

RNAV (GPS) RWY 28
FAYETTEVILLE RGNL/GRANNIS FIELD (FAY)

RNP APCH.	MISSED APPROACH: Climb to 2600 direct FIDBO and on 261° track to SUGAE and hold.
 For uncompensated Baro-VNAV systems, LNAV/VNAV NA below -10° C or above 54°C.	

ATIS 121.25	FAYETTEVILLE APP CON 133.0 290.25	FAYETTEVILLE TOWER 118.3 269.2	GND CON 121.7 348.6
-----------------------	---	--	-------------------------------



2600	FIDBO	trk 261°	SUGAE	4 NM Holding Pattern
*LNAV only.				
	*1.2 NM to RW28	FIKUL 1900	JAGOB	098° → 14000 ← 278° 2600
	RW28	1900		GP 3.00° TCH 35
	1.2	4 NM	5 NM	
CATEGORY	A	B	C	D
LNAV/VNAV	DA	500-1¼	312 (400-1¼)	
LNAV MDA	600-1	412 (500-1)	600-1¼	412 (500-1¼)
 CIRCLING	640-1¼ 451 (500-1¼)	660-1¼ 471 (500-1¼)	860-2 671 (700-2)	860-2¼ 671 (700-2¼)