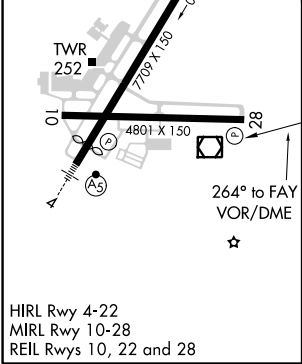
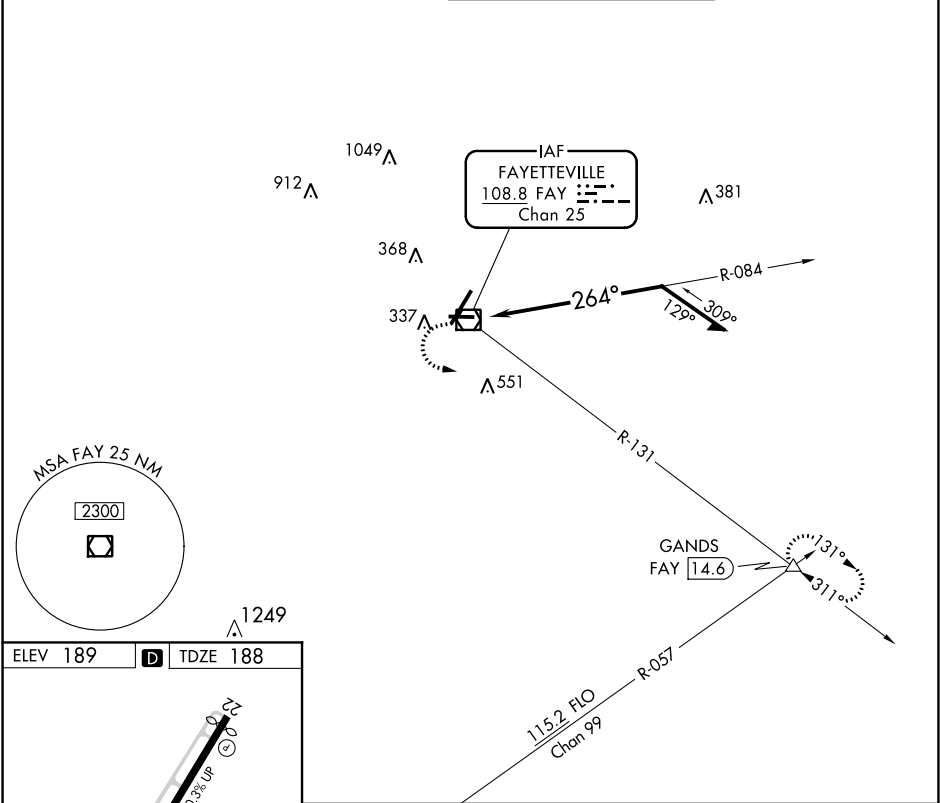


VOR/DME FAY	APP CRS	Rwy Idg	4801
108.8	264°	TDZE	188
Chan 25		Apt Elev	189

VOR RWY 28

FAYETTEVILLE RGNL/GRANNIS FIELD (FAY)

MISSED APPROACH: Climb to 1100 then climbing left turn to 3000 on FAY R-131 to GANDS INT/FAY 14.6 DME and hold.	
ATIS 121.25	FAYETTEVILLE APP CON 133.0 290.25
FAYETTEVILLE TOWER 118.3 269.2	
GND CON 121.7 348.6	



1100	3000	GANDS	FAY VOR/DME		Remain within 10 NM
↑	FAY R-131	△	FAY 1.7		084°
			264°		2000
			0.1 1.6		
CATEGORY	A	B	C	D	
S-28	700-1	512 (600-1)	700-1⅜	512 (600-1⅜)	
CIRCLING	700-1	511 (600-1)	860-2 671 (700-2)	860-2¼ 671 (700-2¼)	