

WAAS CH 99422 W19A	APP CRS 194°	Rwy Idg 4400 TDZE 1166 Apt Elev 1190
--	------------------------	---

RNAV (GPS) RWY 19

HICKORY RGNL (HKY)

RNP APCH

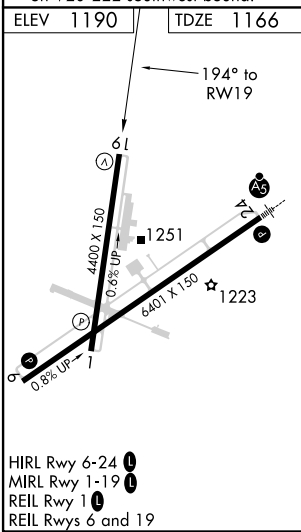
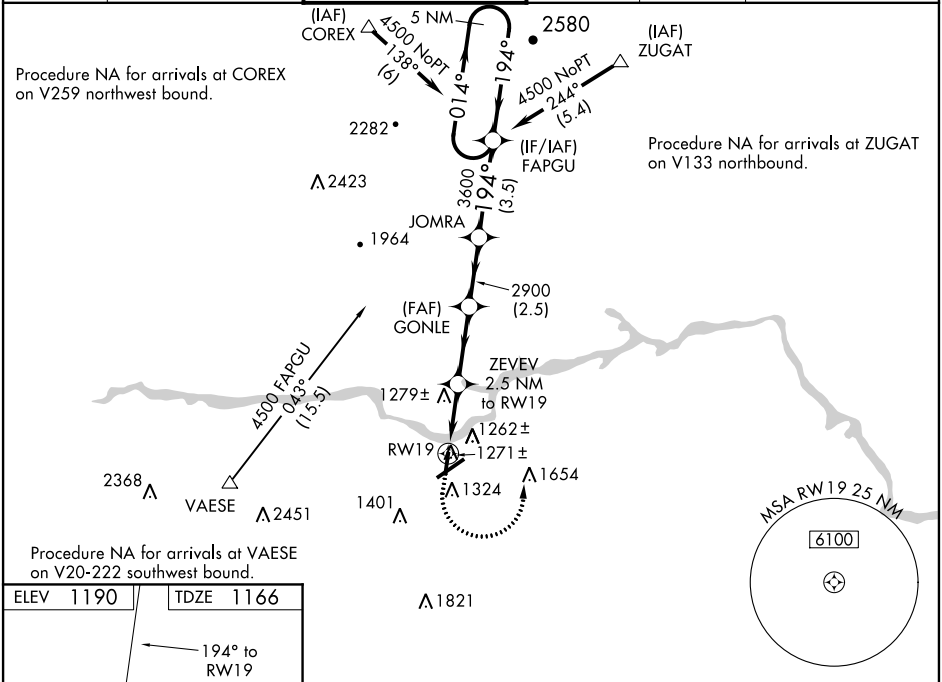
▼

Baro-VNAV NA when using Morganton altimeter setting. For uncompensated Baro-VNAV systems, LNAV/VNAV NA below -17°C (2°F) or above 36°C (96°F). Rwy 19 helicopter visibility reduction below 1 SM NA. When local altimeter setting not received, use Morganton altimeter setting and increase all DA 39 feet and all MDA 40 feet; increase LNAV/VNAV all Cats, and LNAV Cat C/D visibility ½ mile. Straight-in Rwy 19 NA at night, Circling Rwy 1, 6, 19 NA at night.

MISSED APPROACH:

Climb to 1700 then climbing left turn to 5600 direct FAPGU and hold, continue climb-in-hold to 5600.

ASOS 118.325	ATLANTA CENTER 125.15 263.0	HICKORY TOWER ★ 128.15 (CTAF) 0	GND CON 121.7	CLNC DEL 121.7	CLNC DEL 124.25 (When twr closed)
------------------------	---------------------------------------	---	-------------------------	--------------------------	--



1700 ↑		5600 ↷		FAPGU ✦		VGSI and RNAV glidepath not coincident (VGSI Angle 3.00/TCH 33).			
* LNAV only.		ZEVEV 2.5 NM to RW19		GONLE 2900		JOMRA		FAPGU 5 NM Holding Pattern	
RW19		2.5 NM		2.8 NM		2.5 NM		3.5 NM	
2000		2900		194°		014° → 4500		← 194°	
3600		2900		GP 3.00° TCH 45					
CATEGORY		A		B		C		D	
LPV DA		1416-1		250 (300-1)					
LNAV/ VNAV DA		1452-1		286 (300-1)					
LNAV MDA		1540-1		374 (400-1)					
CIRCLING		1640-1 450 (500-1)		1640-1½ 450 (500-1½)		1740-2 550 (600-2)			